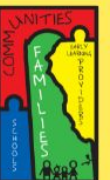
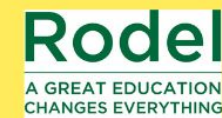


Welcome!

Early Childhood Advocacy Day 2024

May 16, 10 a.m. - 2 p.m.

A day for providers, advocates, and lawmakers to come together to discuss key issues, from supporting families and the early learning workforce to the local economy.



Agenda

10:00 a.m.: Welcome

10:20 a.m.: Panel Discussions

1. *Opportunities to Support Delaware Families*
2. *What it Takes to Serve Families: Investing in the Early Educator Workforce*
3. *Early Childhood is Everyone's Business: How Greater Investments will Support our Children and our Community*

Remarks by Lt. Gov. Bethany Hall-Long

12 p.m.: Lunch (provided)

****Break in Programming and Transition to Advocacy and Outreach at Legislative Hall****

12:45 p.m. - Photo Opportunity at Legislative Hall

1 p.m. - Tabling on 2nd Floor of Legislative Hall; Legislator Meetings as Scheduled

2:30 p.m. - Proclamation signing, Governor's Office, 2nd Floor of Legislative Hall

Scan for today's agenda and resources!

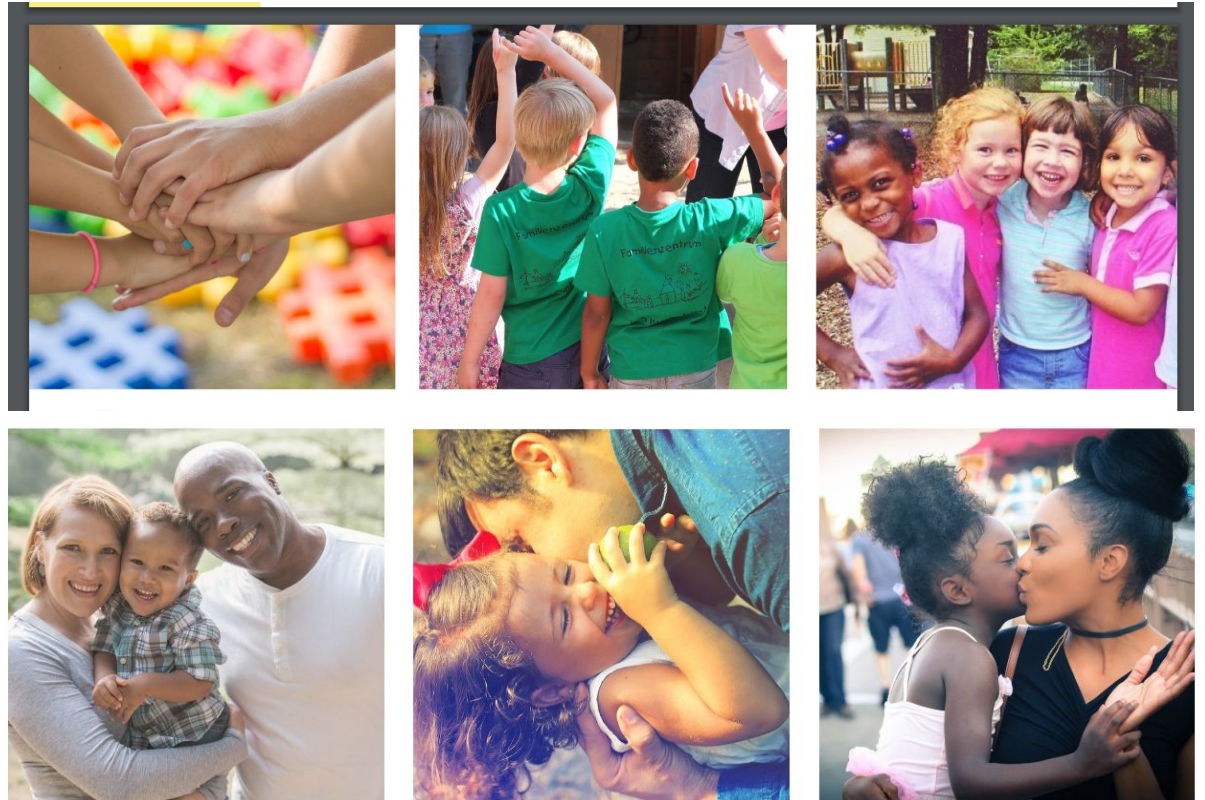


@FirstStatePreK on X and Facebook!
@DE.AEYC on Facebook and Instagram!
Use Hashtag #InvestEarlyDE

Welcome



Tony Allen, Ph.D.,
President, Delaware
State University



Welcome



Sen. Kyle Evans
Gay



Sen. Laura
Sturgeon

Delaware Institute for Excellence in Early Childhood Educator of the Year Award!

“DIEEC’s Early Childhood Educator of the Year Award acknowledges and honors the critical role of professionals in Delaware who exemplify the best in quality early care and education. Our overall goal is to elevate the importance of the early childhood education profession in the public eye.”



UNIVERSITY OF DELAWARE
**EDUCATION &
HUMAN DEVELOPMENT**

Early Childhood Educator of the Year Award Winners!



Mary Waters
Family Child Care
Winner

Ms. Mary's Nature
Preschool, Hartly



Runner-up: Stacy Morgan, Little
Bit of Sunshine Nature Learning
Academy, Townsend



Meghan Eudy
Center-Based Winner

Delaware Technical Community
College Child Development
Center, Georgetown



Runner-up: Caitlin Gibbons,
Brilliant Little Minds at Odessa
Preschool, Townsend

Recents Wins (2024)

Our Advocacy Is Working

- ✓ Increase in Children in Pre-K (200 more)
- ✓ Child Safety Bills Introduced

Purchase of Care

- ✓ Market Rate increase (to 75th percentile of 2024 rate)
- ✓ Workforce investment (to be determined)
- ✓ Family co-payments reduced for 75% of families on Purchase of Care
- ✓ Providers paid for 10 absent days per month
- ✓ Eligibility expanded to 200% Federal Poverty Level

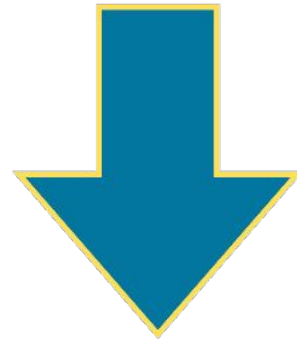
Delaware's Child Care Landscape: By the Numbers

FAMILIES



1 in 5

children under age 5 served in public early care and education programs



Delaware ranks near the bottom for family access

41st eligibility to subsidized care for 0-5 year-olds

42nd access to pre-K for 3- and 4-year-olds

NO ACCESS



- 200% of Fed. Poverty Level
 - (Minimum Wage)
- Neighboring states: 250%-300%

Per-child costs more than housing and college



Download Talking Points here!

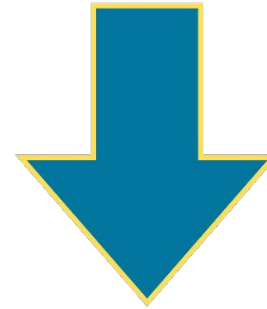
<https://bit.ly/4bCqWhk>

Delaware's Child Care Landscape: By the Numbers

PROVIDERS



- Early care educators make minimum wage
- 1/2 of K-12 salary
- Most without health care benefits or PTO



Increased salary can mean loss of public benefits, including Purchase of Care



The state pays Kent and Sussex County child care providers 30% less than New Castle County providers

Download Talking Points here!

<https://bit.ly/4bCqWhk>

Our Ask: Key Messages

→ Policymakers: Invest Today

- **Increase eligibility** so more families can access care up to at least 250% of the Federal Poverty Level
- **Purchase of Care**
 - Increase rates
 - Pay providers based on enrollment
 - Pay a statewide rate, increase rates in all counties to match NCC
- **Increase special education rates**

Panel 1 Opportunities to Support Delaware Families



Moderated by **Dannaé Sewell**, ECIC Early Childhood Initiatives Officer, Delaware State University

Panelists:

- *Kori Beaman, New Castle County Parent*
- *Julia Hemmer, Sussex County Parent*
- *Liana Pritchett, Kent County Parent*

@FirstStatePreK on X and Facebook!
@DE.AEYC on Facebook and Instagram!
Use Hashtag #InvestEarlyDE

Panel 2 What it Takes to Serve Families: Investing in the Early Educator Workforce



Moderated by **Donald Parsons**, Former Vice Chancellor, Delaware Court of Chancery, Member of the Rotary Club of Wilmington

Panelists:

- ***Melanie Thomas-Price, A Leap of Faith Child Care, Wilmington***
- ***Anesha Law, Walnut Street Y, YMCA of Delaware***
- ***Denise Halcomb, Wonder Years Learning Center, Harrington***
- ***Rhondalin Cannon-Tingle, Rhonda's Little Angels, Seaford***

@FirstStatePreK on X and Facebook!
@DE.AEYC on Facebook and Instagram!
Use Hashtag #InvestEarlyDE

Panel 3 Early Childhood is Everyone's Business: How Greater Investments Will Support Our Community



Moderated by **Kirsten Olson**, Children and Families First

Panelists:

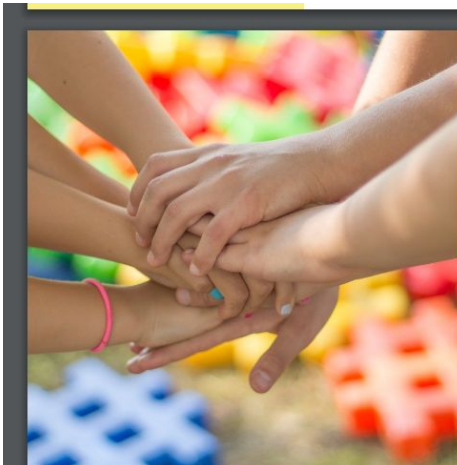
- ***Colleen Perry Keith, Goldey-Beacom College***
- ***Priscilla Mpasi, ChristianaCare***
- ***Lauren Weaver, Bethany Fenwick Chamber of Commerce***

@FirstStatePreK on X and Facebook!
@DE.AEYC on Facebook and Instagram!
Use Hashtag #InvestEarlyDE

Closing



**Lt. Gov. Bethany
Hall-Long**



Key Messages

→ Significant Need for Additional State Investments

- Limited access to public early care and education
- Many vulnerable families cannot afford care
- Lack of access and cost to families are holding back our economy
- Child care providers continue to operate with limited openings

→ Policymakers: Invest Today

- Increase eligibility so more families can access care up to at least 250% of the Federal Poverty Level
- Increase Purchase of Care rates
- Pay providers based on enrollment
- Pay a statewide rate, increase rates in all counties to match NCC
- Increase special education rates

Bills

- **SB 294 builds the capacity of the Office of Child Care Licensing by providing equitable compensation of licensing specialists on par with other Delaware Department of Education employees.**
- **SJR 7 directs the Office of Child Care Licensing to modernize the child care licensing system, including an electronic system for providers, within the next two years.**
- **SB 295 strengthens process to obtain job applicants' child care employment history, increasing hiring safeguards.**

Download Talking
Points here!

<https://bit.ly/4bCqWhk>

Calls to Action

Send a Message to Lawmakers:

bit.ly/FY25ChildCareAsk
legis.delaware.gov/FindMyLegislator

@FirstStatePreK on X and Facebook!
@DE.AEYC on Facebook and Instagram!
Use Hashtag #InvestEarlyDE

Follow us online:

- deaeyc.org/advocacy
- firststateprek.com
- delawarereadinessteams.com



Find Your Local Senator and Representative

and tell them to prioritize early childhood education:

legis.delaware.gov/FindMyLegislator

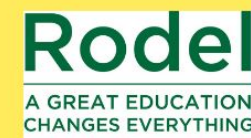
Thank You!

Legislative Hall

12:45 p.m. Photo Opportunity at Legislative Hall

1 p.m. Tabling on 2nd Floor of Legislative Hall; Legislator Meetings as Scheduled

2:30 p.m. - Proclamation signing, Governor's Office, 2nd Floor of Legislative Hall



DELAWARE READINESS TEAMS

Advocacy Day Tips and Tricks

legis.delaware.gov/FindMyLegislator

- **Introduce yourself** and the organization you represent
 - Mention your connection to the legislator (if you live or work in their district)
 - State the issue: why additional investments in early childhood are needed
- **Thank policymakers for their support in the past**
- **Explain the problem you/r families are facing and the impacts of lack of affordable child care**
 - *Use stories of real people if possible!*
 - *Show them the lack of child care in their district!*
 - **Profiles by district:** <https://bit.ly/4bEP03f>
 - Make the ask
 - Explain the result this would have on the families you serve
 - Restate the ask
- **Thank them**

** Invite them to your child care program for a site visit **