

Child Care Supply Across Delaware By District

1. [Table of Contents](#)
2. [State House District 1 – Nnamdi O. Chukwuocha](#)
3. [State House District 2 – Stephanie T. Bolden](#)
4. [State House District 3 – Sherry Dorsey Walker](#)
5. [State House District 4 – Jeff Hilovsky](#)
6. [State House District 5 – Kendra Johnson](#)
7. [State House District 6 – Debra Heffernan](#)
8. [State House District 7 – Larry Lambert](#)
9. [State House District 8 – Sherae'a Moore](#)
10. [State House District 9 – Kevin S. Hensley](#)
11. [State House District 10 – Sean Matthews](#)
12. [State House District 11 – Jeffrey N. Spiegelman](#)
13. [State House District 12 – Krista Griffith](#)
14. [State House District 13 – Deshanna U. Neal](#)
15. [State House District 14 – Peter C. Schwartzkopf](#)
16. [State House District 15 – Valerie Longhurst](#)
17. [State House District 16 – Franklin D. Cooke](#)
18. [State House District 17 – Melissa Minor-Brown](#)
19. [State House District 18 – Sophie Phillips](#)
20. [State House District 19 – Kimberly Williams](#)
21. [State House District 20 – Stell Parker Selby](#)
22. [State House District 21 – Michael Ramone](#)
23. [State House District 22 – Michael F. Smith](#)
24. [State House District 23 – Paul S. Baumbach](#)
25. [State House District 24 – Edward S. Osienski](#)
26. [State House District 25 – Cydnie Romer](#)
27. [State House District 26 – Madinah Wilson-Anton](#)
28. [State House District 27 – Eric Morrison](#)
29. [State House District 28 – William J. Carson](#)
30. [State House District 29 – William Bush](#)
31. [State House District 30 – Shannon Morris](#)
32. [State House District 31 – Sean M. Lynn](#)
33. [State House District 32 – Kerri Evelyn Harris](#)
34. [State House District 33 – Charles S. Postles Jr.](#)
35. [State House District 34 – Lyndon D. Yearick](#)
36. [State House District 35 – Jesse R. Vanderwende](#)
37. [State House District 36 – Bryan W. Shupe](#)
38. [State House District 37 – Valerie Jones Giltner](#)
39. [State House District 38 – Ronald E. Gray](#)
40. [State House District 39 – Daniel B. Short](#)
41. [State House District 40 – Timothy D. Dukes](#)
42. [State House District 41 – Richard G. Collins](#)
43. [State Senate District 1 – Sarah McBride](#)
44. [State Senate District 2 – Darius J. Brown](#)
45. [State Senate District 3 – S. Elizabeth Lockman](#)
46. [State Senate District 4 – Laura V. Sturgeon](#)
47. [State Senate District 5 – Kyle Evans Gay](#)
48. [State Senate District 6 – Russel Huxtable](#)
49. [State Senate District 7 – Spiros Mantzavinou](#)
50. [State Senate District 8 – David P. Sokola](#)
51. [State Senate District 9 – John “Jack” Walsh](#)
52. [State Senate District 10 – Stephanie L. Hansen](#)
53. [State Senate District 11 – Bryan Townsend](#)
54. [State Senate District 12 – Nicole Poore](#)
55. [State Senate District 13 – Marie Pinkney](#)
56. [State Senate District 14 – Kyra L. Hoffner](#)
57. [State Senate District 15 – Dave G. Lawson](#)
58. [State Senate District 16 – Eric Buckson](#)
59. [State Senate District 17 – Trey Paradee](#)
60. [State Senate District 18 – Dave L. Wilmsen](#)
61. [State Senate District 19 – Brian Pettyjohn](#)
62. [State Senate District 20 – Gerald W. Hocker](#)
63. [State Senate District 21 – Bryant L. Richardson](#)
64. [New Castle County Parents Speak Up](#)
65. [Kent County Parents Speak Up](#)
66. [Sussex County parents Speak Up](#)



Delaware Association for the
Education of Young Children



Child Care Supply In Your District

Legislators, invest in early care and education!

**NNAMDI O.
CHUKWUOCHA**
State House District 1



- Family Child Care
- Child Care Center

Licensed capacity¹

1,566

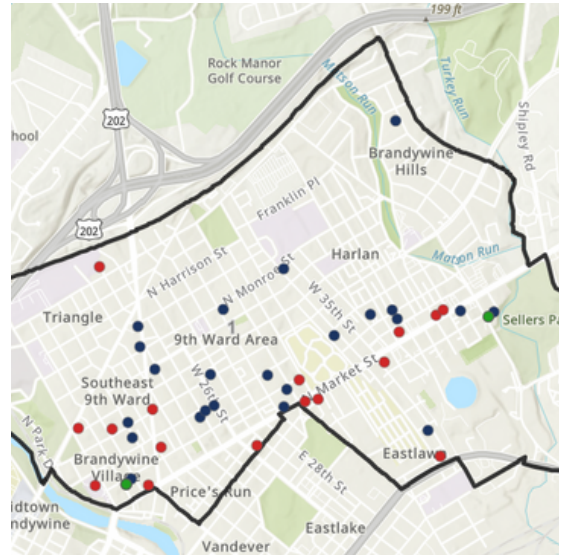
Total number of providers²

42

Estimated number of children 0-9 in district³

2,429

District 1 Map



April 2024 bit.ly/DEchildcaresupply

deaeyc

Delaware Association for the Education of Young Children

Rodel

A GREAT EDUCATION
CHANGES EVERYTHING

FIRST STATE
Pre-K

¹ Overstates number of children that can be served due to calculation based on square footage only rather than actual capacity, and most centers are not at full capacity due to underfunding and related staff shortages

² Does not include unlicensed private and public schools

³ According to the U.S. Census

Child Care Supply In Your District

Legislators, invest in early care and education!

STEPHANIE T. BOLDEN
State House District 2



- Family Child Care
- Child Care Center

Licensed capacity¹

3,677

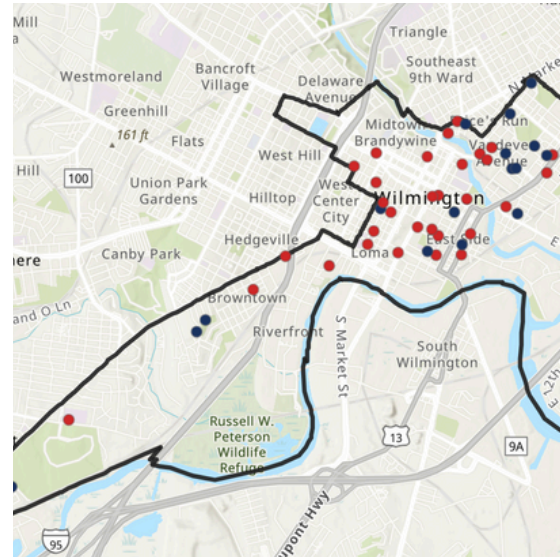
Total number of providers²

49

Estimated number of children 0-9 in district³

3,389

District 2 Map



April 2024 bit.ly/DEchildcaresupply

deaeyc

Delaware Association for the Education of Young Children

Rodel

A GREAT EDUCATION CHANGES EVERYTHING

FIRST STATE
Pre-K

¹ Overstates number of children that can be served due to calculation based on square footage only rather than actual capacity, and most centers are not at full capacity due to underfunding and related staff shortages

² Does not include unlicensed private and public schools

³ According to the U.S. Census

Child Care Supply In Your District

**SHERRY DORSEY
WALKER**

State House District 3



Legislators, invest in early care and education!

- Family Child Care
- Child Care Center

Licensed capacity¹

3,481

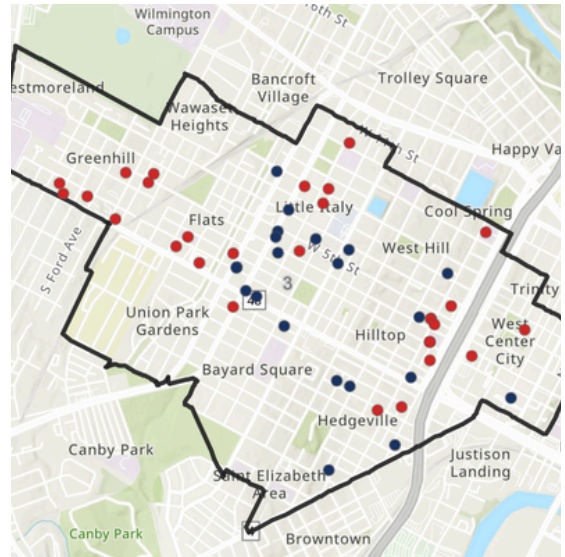
Total number of
providers²

50

Estimated number
of children 0-9 in
district³

2,516

District 3 Map



April 2024 bit.ly/DEchildcaresupply

deaeyc

Delaware Association for the
Education of Young Children

Rodel

A GREAT EDUCATION
CHANGES EVERYTHING

FIRST STATE
Pre-K

¹ Overstates number of children that can be served due to calculation based on square footage only rather than actual capacity, and most centers are not at full capacity due to underfunding and related staff shortages

² Does not include unlicensed private and public schools

³ According to the U.S. Census

Child Care Supply In Your District

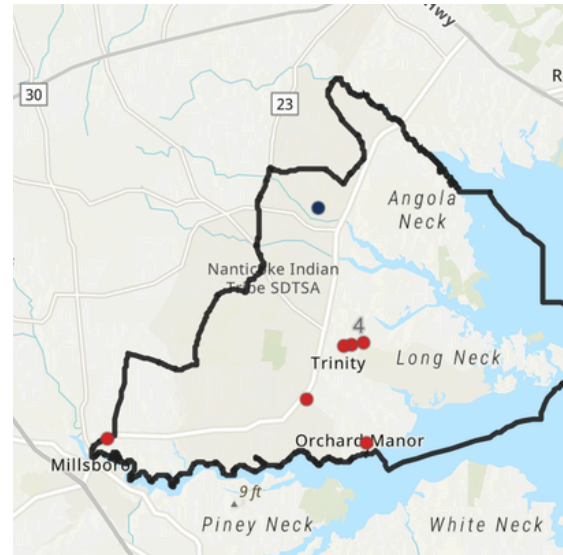
JEFF HILOVSKY

State House District 4



Legislators, invest in early care and education!

District 4 Map



- Family Child Care
- Child Care Center

Licensed capacity¹

375

Total number of providers²

7

Estimated number of children 0-9 in district³

1,364

April 2024 bit.ly/DEchildcaresupply

deaeyc

Delaware Association for the Education of Young Children

Rodel

A GREAT EDUCATION CHANGES EVERYTHING

FIRST STATE
Pre-K

¹ Overstates number of children that can be served due to calculation based on square footage only rather than actual capacity, and most centers are not at full capacity due to underfunding and related staff shortages

² Does not include unlicensed private and public schools

³ According to the U.S. Census

Child Care Supply In Your District

Legislators, invest in early care and education!

**KENDRA
JOHNSON**
State House District 5



- Family Child Care
- Child Care Center

Licensed capacity¹

1,387

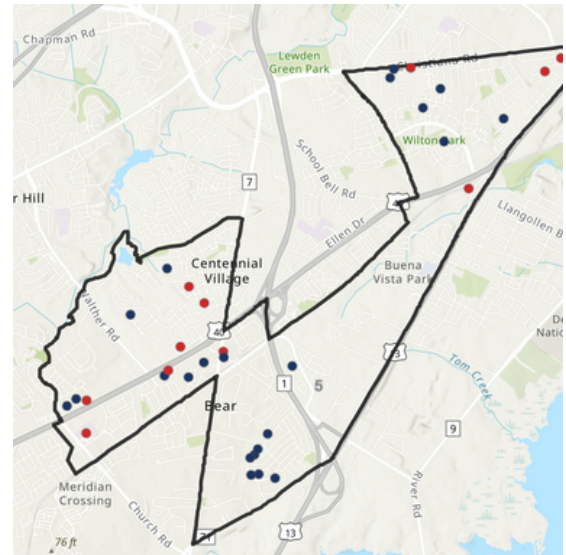
Total number of
providers²

33

Estimated number
of children 0-9 in
district³

2,683

District 5 Map



April 2024 bit.ly/DEchildcaresupply

deaeyc

Delaware Association for the
Education of Young Children

Rodel

A GREAT EDUCATION
CHANGES EVERYTHING

FIRST STATE
Pre-K

¹ Overstates number of children that can be served due to calculation based on square footage only rather than actual capacity, and most centers are not at full capacity due to underfunding and related staff shortages

² Does not include unlicensed private and public schools

³ According to the U.S. Census

Child Care Supply In Your District

Legislators, invest in early care and education!

DEBRA HEFFERNAN
State House District 6



- Family Child Care
- Child Care Center

Licensed capacity¹

924

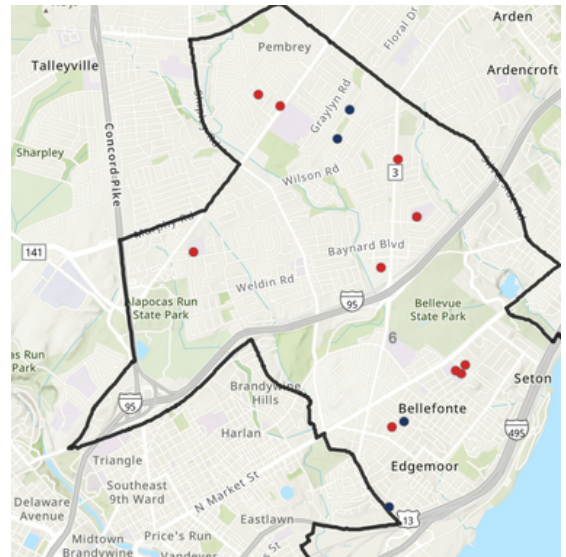
Total number of providers²

14

Estimated number of children 0-9 in district³

2,313

District 6 Map



April 2024 bit.ly/DEchildcaresupply

deaeyc

Delaware Association for the Education of Young Children

Rodel

A GREAT EDUCATION CHANGES EVERYTHING

FIRST STATE
Pre-K

¹ Overstates number of children that can be served due to calculation based on square footage only rather than actual capacity, and most centers are not at full capacity due to underfunding and related staff shortages

² Does not include unlicensed private and public schools

³ According to the U.S. Census

Child Care Supply In Your District

Legislators, invest in early care and education!

**LARRY
LAMBERT**
State House District 7



- Family Child Care
- Child Care Center

Licensed capacity¹

1,309

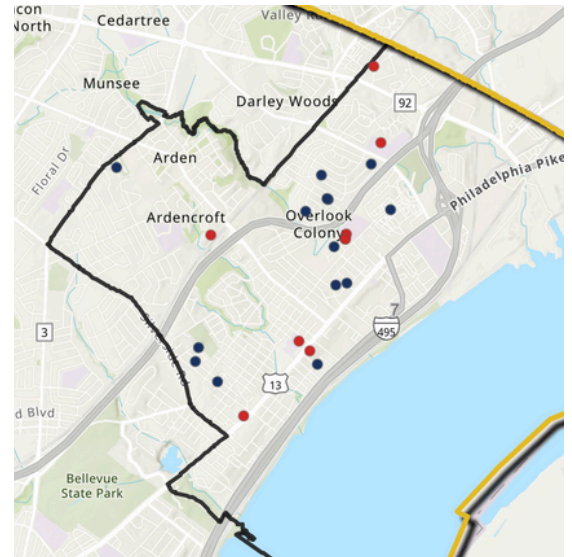
Total number of
providers²

23

Estimated number
of children 0-9 in
district³

2,825

District 7 Map



April 2024 bit.ly/DEchildcaresupply

deaeyc

Delaware Association for the
Education of Young Children

Rodel

A GREAT EDUCATION
CHANGES EVERYTHING

FIRST STATE
Pre-K

¹ Overstates number of children that can be served due to calculation based on square footage only rather than actual capacity, and most centers are not at full capacity due to underfunding and related staff shortages

² Does not include unlicensed private and public schools

³ According to the U.S. Census

Child Care Supply In Your District

**SHERAE'A
MOORE**

State House District 8



Legislators, invest in early care and education!

- Family Child Care
- Child Care Center

Licensed capacity¹

1,792

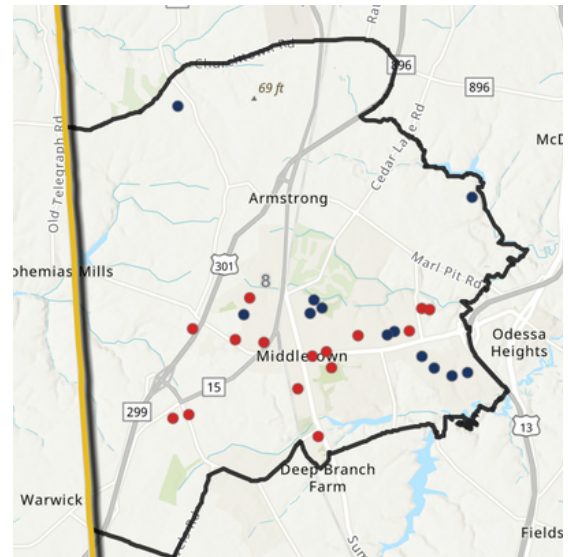
Total number of
providers²

27

Estimated number
of children 0-9 in
district³

2,828

District 8 Map



April 2024 bit.ly/DEchildcaresupply

deaeyc

Delaware Association for the
Education of Young Children

Rodel

A GREAT EDUCATION
CHANGES EVERYTHING

FIRST STATE
Pre-K

¹ Overstates number of children that can be served due to calculation based on square footage only rather than actual capacity, and most centers are not at full capacity due to underfunding and related staff shortages

² Does not include unlicensed private and public schools

³ According to the U.S. Census

Child Care Supply In Your District

**KEVIN S.
HENSLEY**

State House District 9



Legislators, invest in early care and education!

- Family Child Care
- Child Care Center

Licensed capacity¹

1,306

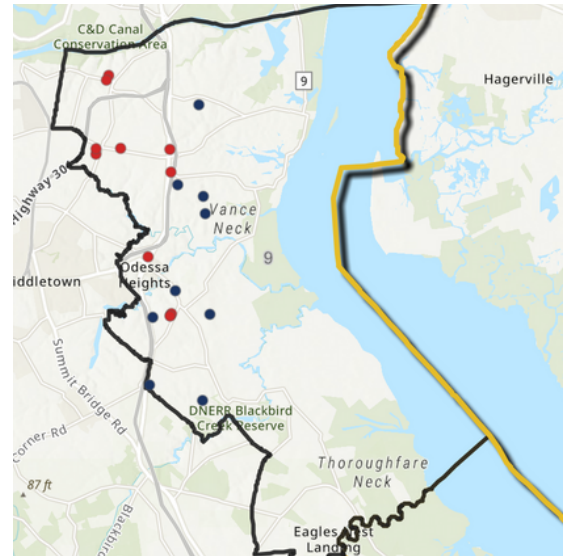
Total number of providers²

20

Estimated number of children 0-9 in district³

3,745

District 9 Map



April 2024 bit.ly/DEchildcaresupply

deaeyc

Delaware Association for the Education of Young Children

Rodel

A GREAT EDUCATION
CHANGES EVERYTHING

FIRST STATE
Pre-K

1 Overstates number of children that can be served due to calculation based on square footage only rather than actual capacity, and most centers are not at full capacity due to underfunding and related staff shortages

2 Does not include unlicensed private and public schools

3 According to the U.S. Census

Child Care Supply In Your District

**SEAN
MATTHEWS**

State House District 10



Legislators, invest in early care and education!

- Family Child Care
- Child Care Center

Licensed capacity¹

1,172

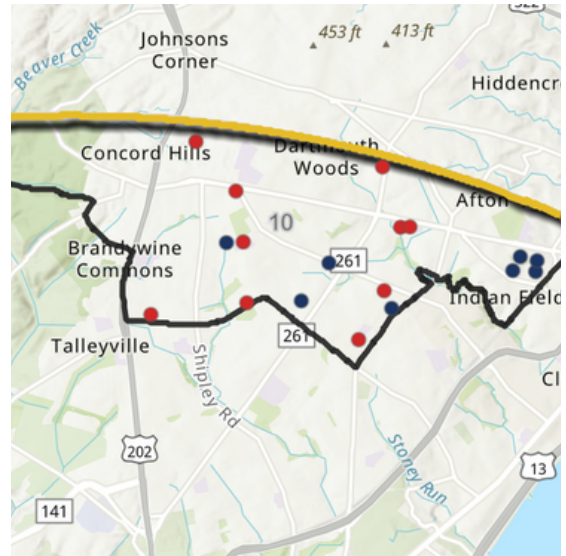
Total number of providers²

19

Estimated number of children 0-9 in district³

2,665

District 10 Map



April 2024 bit.ly/DEchildcaresupply

deaeyc

Delaware Association for the Education of Young Children

Rodel

A GREAT EDUCATION
CHANGES EVERYTHING

FIRST STATE
Pre-K

¹ Overstates number of children that can be served due to calculation based on square footage only rather than actual capacity, and most centers are not at full capacity due to underfunding and related staff shortages
² Does not include unlicensed private and public schools
³ According to the U.S. Census

Child Care Supply In Your District

**JEFFREY N.
SPIEGELMAN**

State House District 11



Legislators, invest in early care and education!

- Family Child Care
- Child Care Center

Licensed capacity¹

702

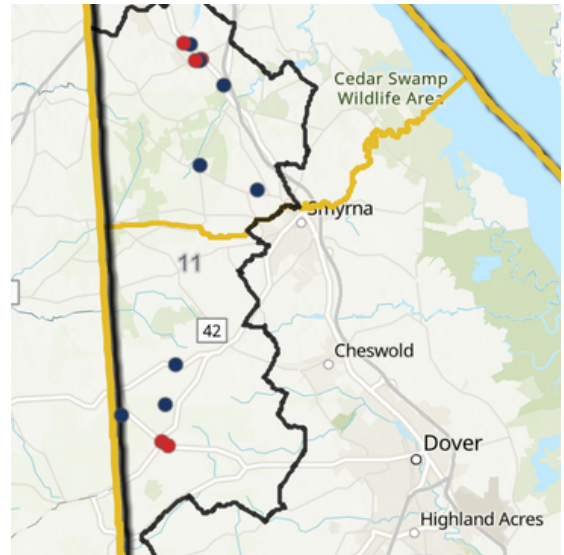
Total number of
providers²

13

Estimated number
of children 0-9 in
district³

2,745

District 11 Map



April 2024 bit.ly/DEchildcaresupply

deaeyc

Delaware Association for the
Education of Young Children

Rodel

A GREAT EDUCATION
CHANGES EVERYTHING

FIRST STATE
Pre-K

¹ Overstates number of children that can be served due to calculation based on square footage only rather than actual capacity, and most centers are not at full capacity due to underfunding and related staff shortages

² Does not include unlicensed private and public schools

³ According to the U.S. Census

Child Care Supply In Your District

**KRISTA
GRIFFITH**

State House District 12



Legislators, invest in early care and education!

- Family Child Care
- Child Care Center

Licensed capacity¹

1,602

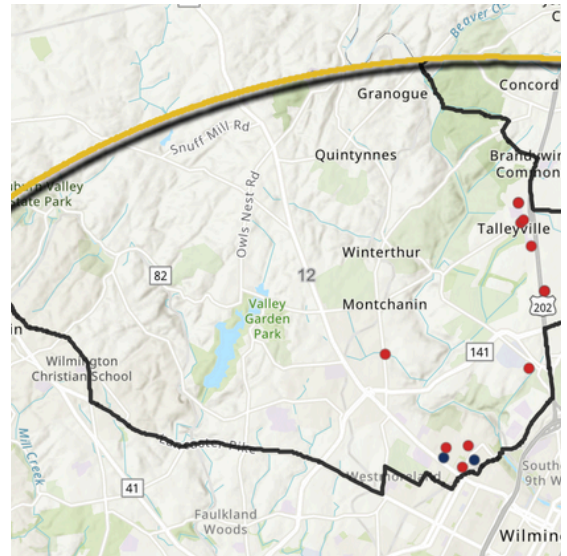
Total number of
providers²

15

Estimated number
of children 0-9 in
district³

2,415

District 12 Map



April 2024 bit.ly/DEchildcaresupply

deaeyc

Delaware Association for the
Education of Young Children

Rodel

A GREAT EDUCATION
CHANGES EVERYTHING

FIRST STATE
Pre-K

¹ Overstates number of children that can be served due to calculation based on square footage only rather than actual capacity, and most centers are not at full capacity due to underfunding and related staff shortages

² Does not include unlicensed private and public schools

³ According to the U.S. Census

Child Care Supply In Your District

**DESHANNA U.
NEAL**

State House District 13



Legislators, invest in early care and education!

- Family Child Care
- Child Care Center

Licensed capacity¹

976

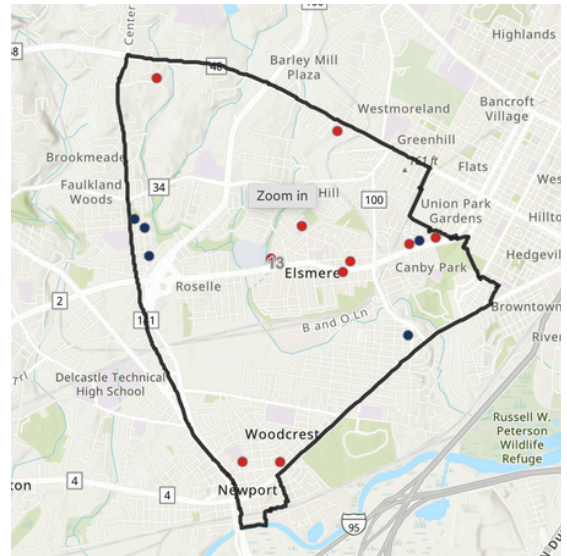
Total number of
providers²

15

Estimated number
of children 0-9 in
district³

3,046

District 13 Map



April 2024 bit.ly/DEchildcaresupply

deaeyc

Delaware Association for the
Education of Young Children

Rodel

A GREAT EDUCATION
CHANGES EVERYTHING

FIRST STATE
Pre-K

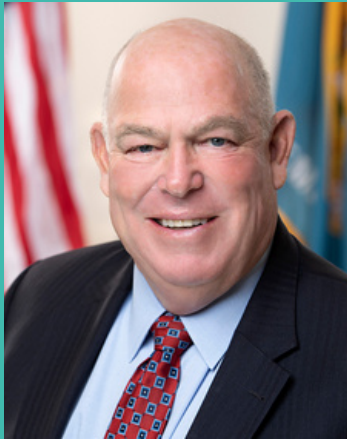
¹ Overstates number of children that can be served due to calculation based on square footage only rather than actual capacity, and most centers are not at full capacity due to underfunding and related staff shortages

² Does not include unlicensed private and public schools

³ According to the U.S. Census

Child Care Supply In Your District

PETER C. SCHWARTZKOPF
State House District 14



Legislators, invest in early care and education!

- Family Child Care
- Child Care Center

Licensed capacity¹

1646

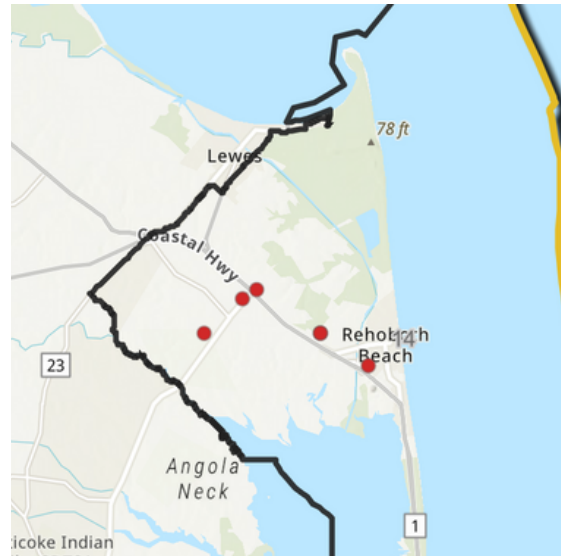
Total number of providers²

21

Estimated number of children 0-9 in district³

1,149

District 14 Map



April 2024 bit.ly/DEchildcaresupply

deaeyc

Delaware Association for the Education of Young Children

Rodel

A GREAT EDUCATION CHANGES EVERYTHING

FIRST STATE
Pre-K

¹ Overstates number of children that can be served due to calculation based on square footage only rather than actual capacity, and most centers are not at full capacity due to underfunding and related staff shortages

² Does not include unlicensed private and public schools

³ According to the U.S. Census

Child Care Supply In Your District

Legislators, invest in early care and education!

**VALERIE
LONGHURST**
State House District 15



- Family Child Care
- Child Care Center

Licensed capacity¹

1,032

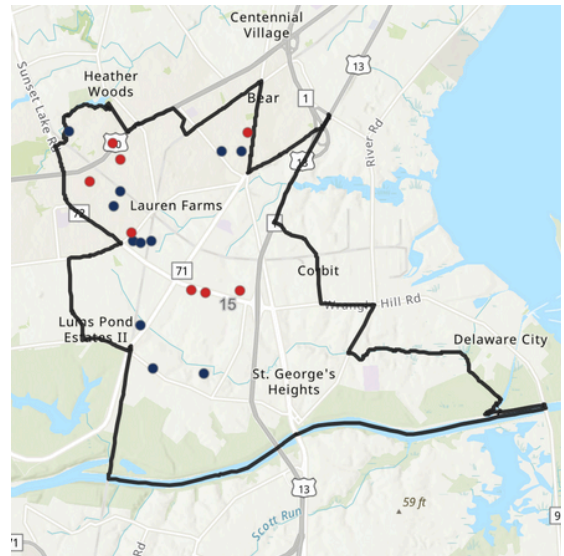
Total number of
providers²

19

Estimated number
of children 0-9 in
district³

2,622

District 15 Map



April 2024 bit.ly/DEchildcaresupply

deaeyc

Delaware Association for the
Education of Young Children

Rodel

A GREAT EDUCATION
CHANGES EVERYTHING

FIRST STATE
Pre-K

¹ Overstates number of children that can be served due to calculation based on square footage only rather than actual capacity, and most centers are not at full capacity due to underfunding and related staff shortages

² Does not include unlicensed private and public schools

³ According to the U.S. Census

Child Care Supply In Your District

**FRANKLIN D.
COOKE**

State House District 16



Legislators, invest in early care and education!

- Family Child Care
- Child Care Center

Licensed capacity¹

2,075

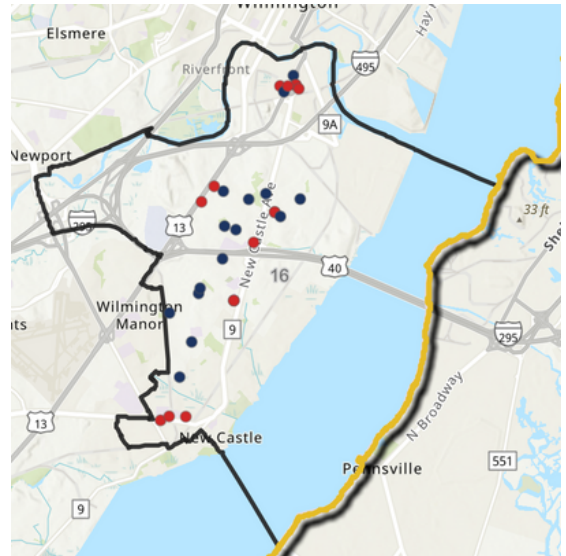
Total number of
providers²

30

Estimated number
of children 0-9 in
district³

3,169

District 16 Map



April 2024 bit.ly/DEchildcaresupply

deaeyc

Delaware Association for the
Education of Young Children

Rodel

A GREAT EDUCATION
CHANGES EVERYTHING

FIRST STATE
Pre-K

¹ Overstates number of children that can be served due to calculation based on square footage only rather than actual capacity, and most centers are not at full capacity due to underfunding and related staff shortages

² Does not include unlicensed private and public schools

³ According to the U.S. Census

Child Care Supply In Your District

Legislators, invest in early care and education!

**MELISSA
MINOR-BROWN**
State House District 17



- Family Child Care
- Child Care Center

Licensed capacity¹

1,315

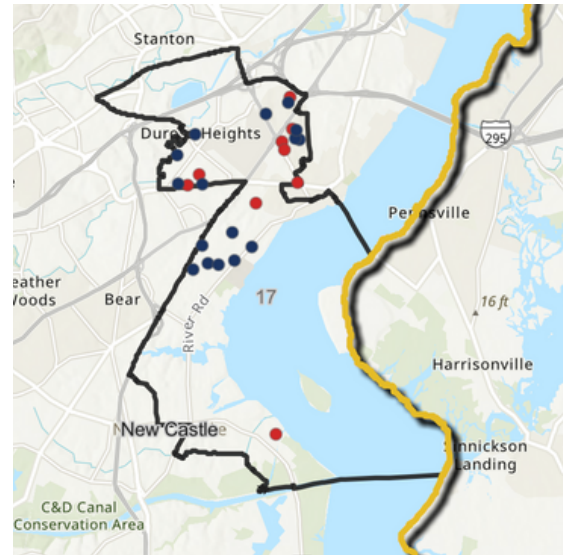
Total number of
providers²

25

Estimated number
of children 0-9 in
district³

2,112

District 17 Map



April 2024 bit.ly/DEchildcaresupply

deaeyc

Delaware Association for the
Education of Young Children

Rodel

A GREAT EDUCATION
CHANGES EVERYTHING

FIRST STATE
Pre-K

¹ Overstates number of children that can be served due to calculation based on square footage only rather than actual capacity, and most centers are not at full capacity due to underfunding and related staff shortages

² Does not include unlicensed private and public schools

³ According to the U.S. Census

Child Care Supply In Your District

SOPHIE PHILLIPS

State House District 18



Legislators, invest in early care and education!

- Family Child Care
- Child Care Center

Licensed capacity¹

1,135

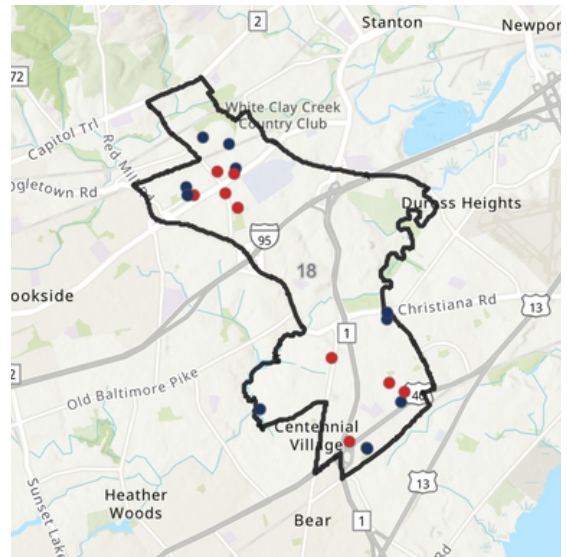
Total number of providers²

21

Estimated number of children 0-9 in district³

3,146

District 18 Map



April 2024 bit.ly/DEchildcaresupply

deaeyc

Delaware Association for the Education of Young Children

Rodel

A GREAT EDUCATION CHANGES EVERYTHING

FIRST STATE
Pre-K

¹ Overstates number of children that can be served due to calculation based on square footage only rather than actual capacity, and most centers are not at full capacity due to underfunding and related staff shortages

² Does not include unlicensed private and public schools

³ According to the U.S. Census

Child Care Supply In Your District

**KIMBERLY
WILLIAMS**

State House District 19



Legislators, invest in early care and education!

- Family Child Care
- Child Care Center

Licensed capacity¹

1,608

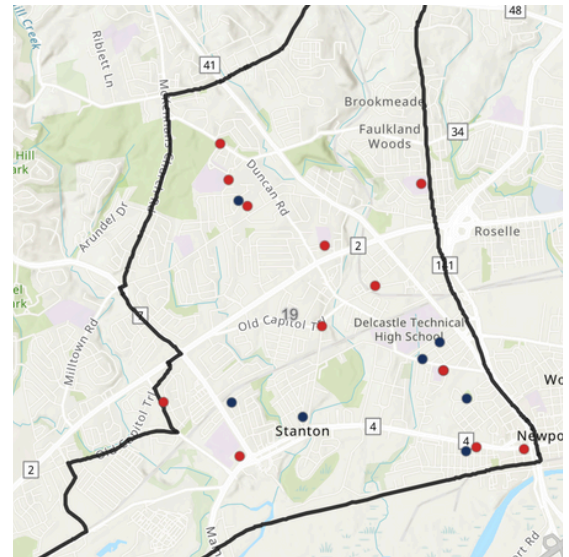
Total number of
providers²

20

Estimated number
of children 0-9 in
district³

2,865

District 19 Map



April 2024 bit.ly/DEchildcaresupply

deaeyc

Delaware Association for the
Education of Young Children

Rodel

A GREAT EDUCATION
CHANGES EVERYTHING

FIRST STATE
Pre-K

¹ Overstates number of children that can be served due to calculation based on square footage only rather than actual capacity, and most centers are not at full capacity due to underfunding and related staff shortages

² Does not include unlicensed private and public schools

³ According to the U.S. Census

Child Care Supply In Your District

**STELL PARKER
SELBY**

State House District 20



Legislators, invest in early care and education!

- Family Child Care
- Child Care Center

Licensed capacity¹

1,476

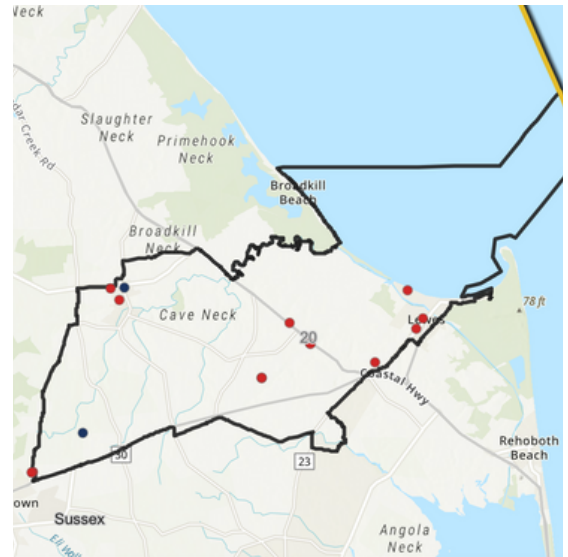
Total number of
providers²

15

Estimated number
of children 0-9 in
district³

1,781

District 20 Map



April 2024 bit.ly/DEchildcaresupply

deaeyc

Delaware Association for the
Education of Young Children

Rodel

A GREAT EDUCATION
CHANGES EVERYTHING

FIRST STATE
Pre-K

¹ Overstates number of children that can be served due to calculation based on square footage only rather than actual capacity, and most centers are not at full capacity due to underfunding and related staff shortages
² Does not include unlicensed private and public schools
³ According to the U.S. Census

Child Care Supply In Your District

**MICHAEL
RAMONE**

State House District 21



Legislators, invest in early care and education!

- Family Child Care
- Child Care Center

Licensed capacity¹

1,428

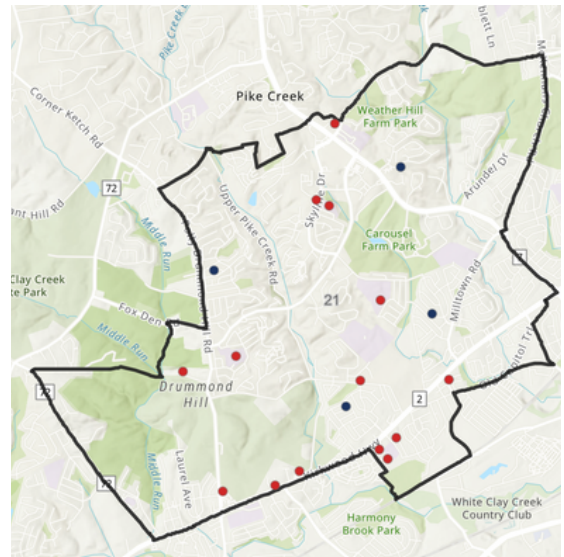
Total number of
providers²

18

Estimated number
of children 0-9 in
district³

2,642

District 21 Map



April 2024 bit.ly/DEchildcaresupply

deaeyc

Delaware Association for the
Education of Young Children

Rodel

A GREAT EDUCATION
CHANGES EVERYTHING

FIRST STATE
Pre-K

¹ Overstates number of children that can be served due to calculation based on square footage only rather than actual capacity, and most centers are not at full capacity due to underfunding and related staff shortages

² Does not include unlicensed private and public schools

³ According to the U.S. Census

Child Care Supply In Your District

**MICHAEL F.
SMITH**

State House District 22



Legislators, invest in early care and education!

- Family Child Care
- Child Care Center

Licensed capacity¹

1,663

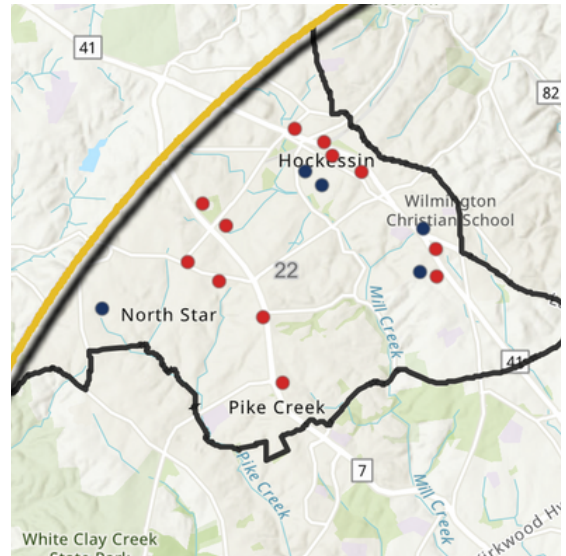
Total number of
providers²

17

Estimated number
of children 0-9 in
district³

2,833

District 22 Map



April 2024 bit.ly/DEchildcaresupply

deaeyc

Delaware Association for the
Education of Young Children

Rodel

A GREAT EDUCATION
CHANGES EVERYTHING

FIRST STATE
Pre-K

¹ Overstates number of children that can be served due to calculation based on square footage only rather than actual capacity, and most centers are not at full capacity due to underfunding and related staff shortages

² Does not include unlicensed private and public schools

³ According to the U.S. Census

Child Care Supply In Your District

**PAUL S.
BAUMBACH**

State House District 23



Legislators, invest in early care and education!

- Family Child Care
- Child Care Center

Licensed capacity¹

1,039

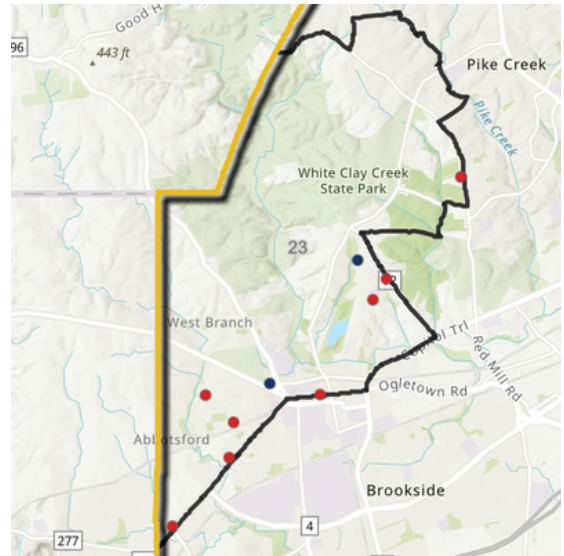
Total number of
providers²

10

Estimated number
of children 0-9 in
district³

2,013

District 23 Map



April 2024 bit.ly/DEchildcaresupply

deaeyc

Delaware Association for the
Education of Young Children

Rodel

A GREAT EDUCATION
CHANGES EVERYTHING

FIRST STATE
Pre-K

¹ Overstates number of children that can be served due to calculation based on square footage only rather than actual capacity, and most centers are not at full capacity due to underfunding and related staff shortages

² Does not include unlicensed private and public schools

³ According to the U.S. Census

Child Care Supply In Your District

**EDWARD S.
OSIENSKI**

State House District 24



Legislators, invest in early care and education!

- Family Child Care
- Child Care Center

Licensed capacity¹

1,630

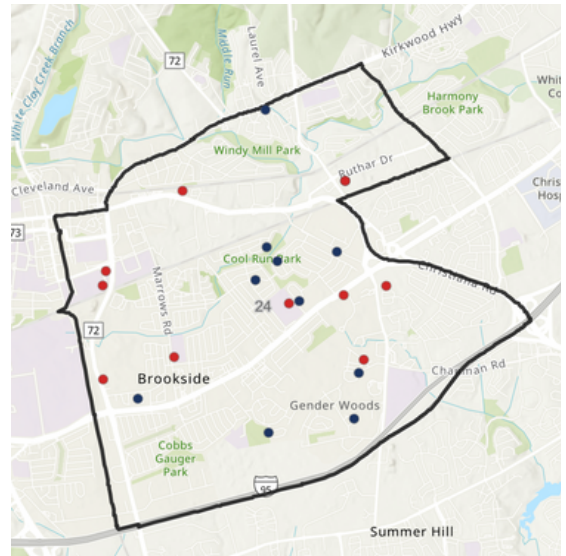
Total number of providers²

21

Estimated number of children 0-9 in district³

2,554

District 24 Map



April 2024 bit.ly/DEchildcaresupply

deaeyc

Delaware Association for the Education of Young Children

Rodel

A GREAT EDUCATION
CHANGES EVERYTHING

FIRST STATE
Pre-K

¹ Overstates number of children that can be served due to calculation based on square footage only rather than actual capacity, and most centers are not at full capacity due to underfunding and related staff shortages

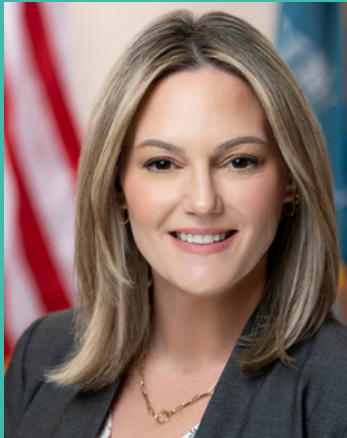
² Does not include unlicensed private and public schools

³ According to the U.S. Census

Child Care Supply In Your District

CYDNIE ROMER

State House District 25



Legislators, invest in early care and education!

- Family Child Care
- Child Care Center

Licensed capacity¹

981

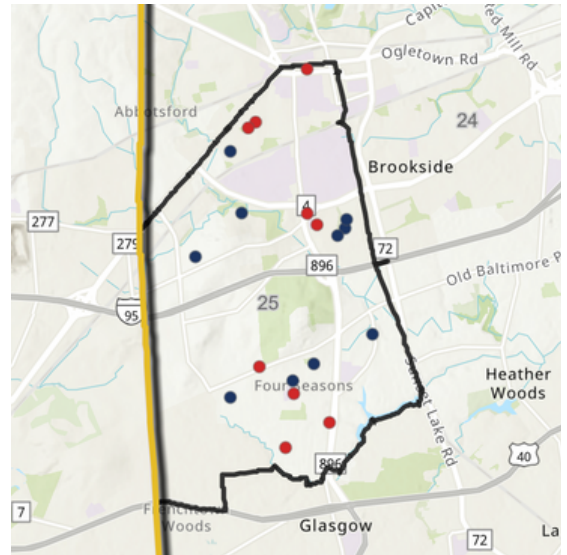
Total number of providers²

19

Estimated number of children 0-9 in district³

1,661

District 25 Map



April 2024 bit.ly/DEchildcaresupply

deaeyc

Delaware Association for the Education of Young Children

Rodel

A GREAT EDUCATION CHANGES EVERYTHING

FIRST STATE
Pre-K

¹ Overstates number of children that can be served due to calculation based on square footage only rather than actual capacity, and most centers are not at full capacity due to underfunding and related staff shortages

² Does not include unlicensed private and public schools

³ According to the U.S. Census

Child Care Supply In Your District

**MADINAH
WILSON-ANTON**
State House District 26



Legislators, invest in early care and education!

- Family Child Care
- Child Care Center

Licensed capacity¹

1,604

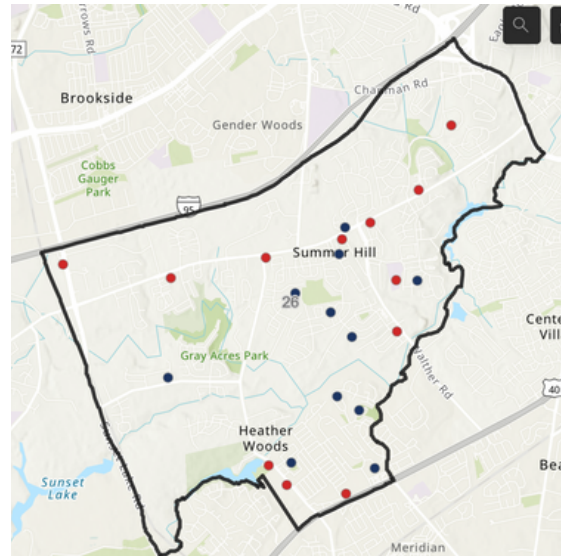
Total number of
providers²

23

Estimated number
of children 0-9 in
district³

3,297

District 26 Map



April 2024 bit.ly/DEchildcaresupply

deaeyc

Delaware Association for the
Education of Young Children

Rodel

A GREAT EDUCATION
CHANGES EVERYTHING

FIRST STATE
Pre-K

1 Overstates number of children that can be served due to calculation based on square footage only rather than actual capacity, and most centers are not at full capacity due to underfunding and related staff shortages

2 Does not include unlicensed private and public schools

3 According to the U.S. Census

Child Care Supply In Your District

ERIC MORRISON

State House District 27



Legislators, invest in early care and education!

- Family Child Care
- Child Care Center

Licensed capacity¹

1,354

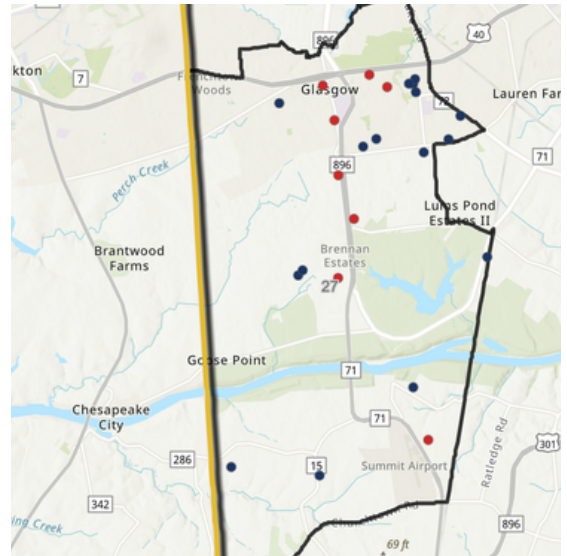
Total number of providers²

24

Estimated number of children 0-9 in district³

3,125

District 27 Map



April 2024 bit.ly/DEchildcaresupply

deaeyc

Delaware Association for the Education of Young Children

Rodel

A GREAT EDUCATION CHANGES EVERYTHING

FIRST STATE
Pre-K

¹ Overstates number of children that can be served due to calculation based on square footage only rather than actual capacity, and most centers are not at full capacity due to underfunding and related staff shortages

² Does not include unlicensed private and public schools

³ According to the U.S. Census

Child Care Supply In Your District

**WILLIAM J.
CARSON**

State House District 28



Legislators, invest in early care and education!

- Family Child Care
- Child Care Center

Licensed capacity¹

1,626

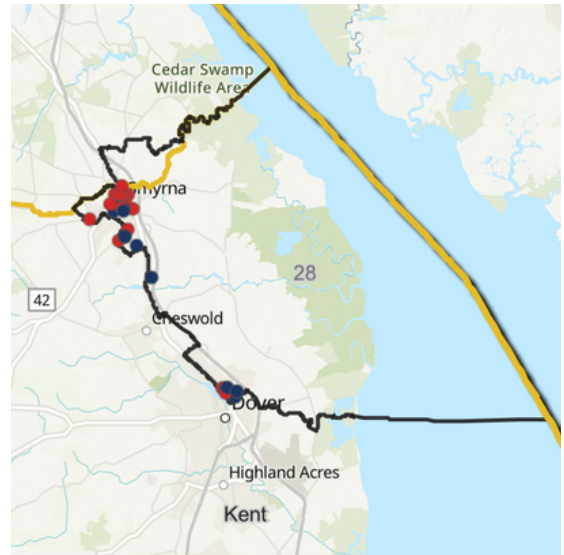
Total number of
providers²

29

Estimated number
of children 0-9 in
district³

3,206

District 28 Map



April 2024 bit.ly/DEchildcaresupply

deaeyc

Delaware Association for the
Education of Young Children

Rodel

A GREAT EDUCATION
CHANGES EVERYTHING

FIRST STATE
Pre-K

¹ Overstates number of children that can be served due to calculation based on square footage only rather than actual capacity, and most centers are not at full capacity due to underfunding and related staff shortages

² Does not include unlicensed private and public schools

³ According to the U.S. Census

Child Care Supply In Your District

WILLIAM BUSH

State House District 29



Legislators, invest in early care and education!

- Family Child Care
- Child Care Center

Licensed capacity¹

711

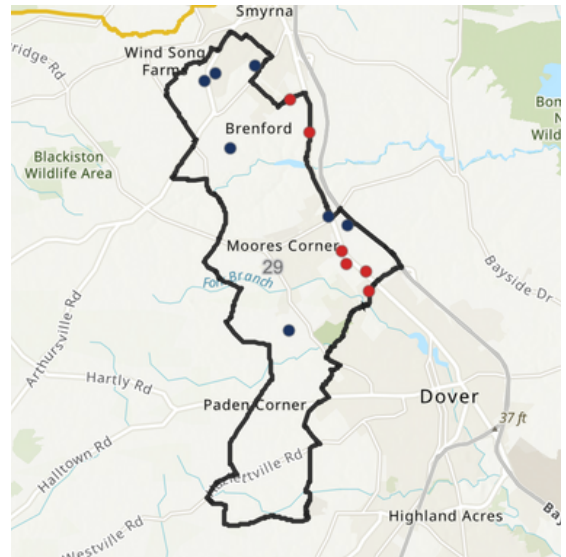
Total number of providers²

13

Estimated number of children 0-9 in district³

1,451

District 29 Map



April 2024 bit.ly/DEchildcaresupply

deaeyc

Delaware Association for the Education of Young Children

Rodel

A GREAT EDUCATION CHANGES EVERYTHING

FIRST STATE
Pre-K

¹ Overstates number of children that can be served due to calculation based on square footage only rather than actual capacity, and most centers are not at full capacity due to underfunding and related staff shortages

² Does not include unlicensed private and public schools

³ According to the U.S. Census

Child Care Supply In Your District

SHANNON
MORRIS

State House District 30



Legislators, invest in early care and education!

- Family Child Care
- Child Care Center

Licensed capacity¹

801

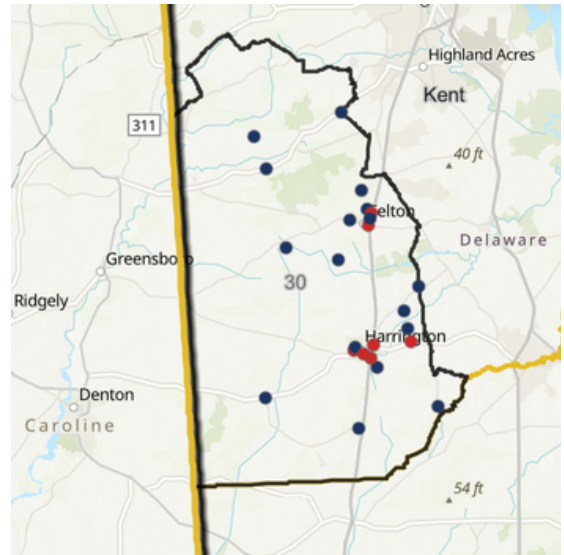
Total number of
providers²

24

Estimated number
of children 0-9 in
district³

3,206

District 30 Map



April 2024 bit.ly/DEchildcaresupply

deaeyc

Delaware Association for the
Education of Young Children

Rodel

A GREAT EDUCATION
CHANGES EVERYTHING

FIRST STATE
Pre-K

¹ Overstates number of children that can be served due to calculation based on square footage only rather than actual capacity, and most centers are not at full capacity due to underfunding and related staff shortages

² Does not include unlicensed private and public schools

³ According to the U.S. Census

Child Care Supply In Your District

SEAN M. LYNN

State House District 31



Legislators, invest in early care and education!

- Family Child Care
- Child Care Center

Licensed capacity¹

1,242

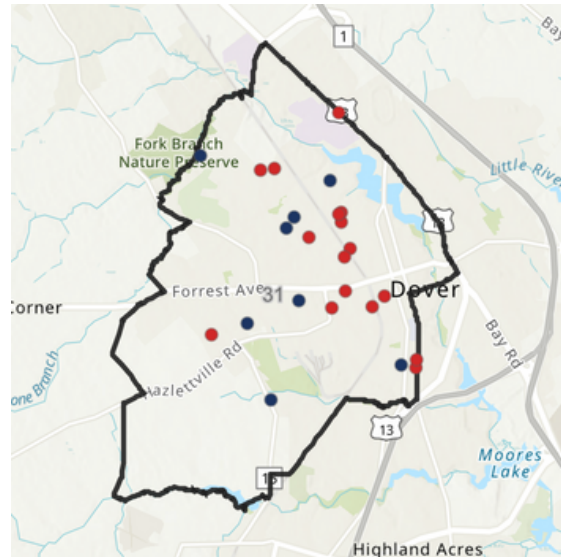
Total number of providers²

24

Estimated number of children 0-9 in district³

2,182

District 31 Map



April 2024 bit.ly/DEchildcaresupply

deaeyc

Delaware Association for the Education of Young Children

Rodel

A GREAT EDUCATION CHANGES EVERYTHING

FIRST STATE
Pre-K

¹ Overstates number of children that can be served due to calculation based on square footage only rather than actual capacity, and most centers are not at full capacity due to underfunding and related staff shortages

² Does not include unlicensed private and public schools

³ According to the U.S. Census

Child Care Supply In Your District

**KERRI EVELYN
HARRIS**

State House District 32



Legislators, invest in early care and education!

- Family Child Care
- Child Care Center

Licensed capacity¹

1,408

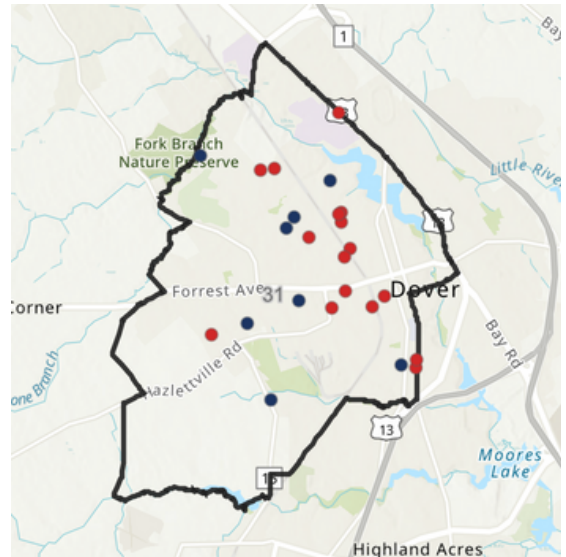
Total number of
providers²

27

Estimated number
of children 0-9 in
district³

4,122

District 32 Map



April 2024 bit.ly/DEchildcaresupply

deaeyc

Delaware Association for the
Education of Young Children

Rodel

A GREAT EDUCATION
CHANGES EVERYTHING

FIRST STATE
Pre-K

¹ Overstates number of children that can be served due to calculation based on square footage only rather than actual capacity, and most centers are not at full capacity due to underfunding and related staff shortages

² Does not include unlicensed private and public schools

³ According to the U.S. Census

Child Care Supply In Your District

**CHARLES S.
POSTLES JR.**

State House District 33



Legislators, invest in early care and education!

- Family Child Care
- Child Care Center

Licensed capacity¹

916

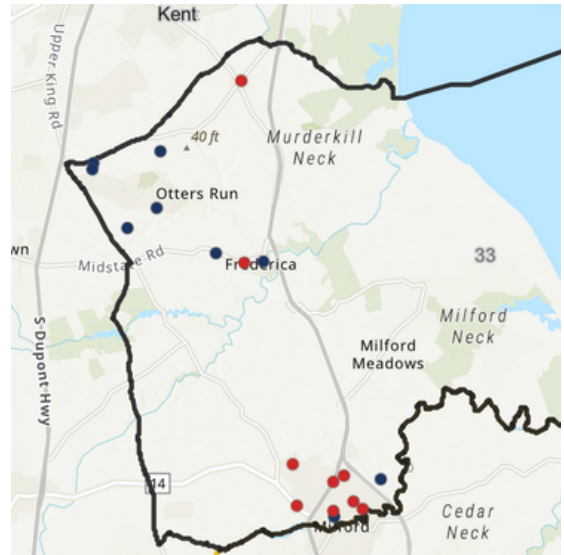
Total number of
providers²

18

Estimated number
of children 0-9 in
district³

2,434

District 33 Map



April 2024 bit.ly/DEchildcaresupply

deaeyc

Delaware Association for the
Education of Young Children

Rodel

A GREAT EDUCATION
CHANGES EVERYTHING

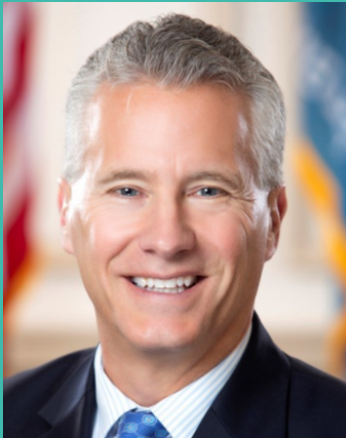
FIRST STATE
Pre-K

¹ Overstates number of children that can be served due to calculation based on square footage only rather than actual capacity, and most centers are not at full capacity due to underfunding and related staff shortages
² Does not include unlicensed private and public schools
³ According to the U.S. Census

Child Care Supply In Your District

LYNDON D.
YEARICK

State House District 34



Legislators, invest in early care and education!

- Family Child Care
- Child Care Center

Licensed capacity¹

823

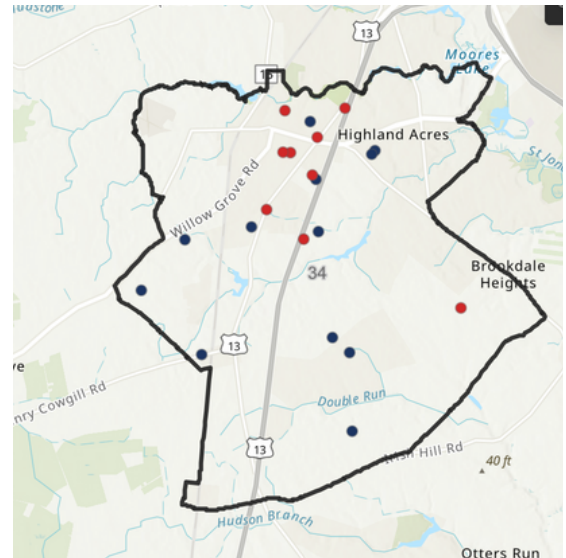
Total number of
providers²

21

Estimated number
of children 0-9 in
district³

3,780

District 34 Map



April 2024 bit.ly/DEchildcaresupply

deaeyc

Delaware Association for the
Education of Young Children

Rodel

A GREAT EDUCATION
CHANGES EVERYTHING

FIRST STATE
Pre-K

¹ Overstates number of children that can be served due to calculation based on square footage only rather than actual capacity, and most centers are not at full capacity due to underfunding and related staff shortages

² Does not include unlicensed private and public schools

³ According to the U.S. Census

Child Care Supply In Your District

Legislators, invest in early care and education!

**JESSE R.
VANDERWENDE**
State House District 35



- Family Child Care
- Child Care Center

Licensed capacity¹

666

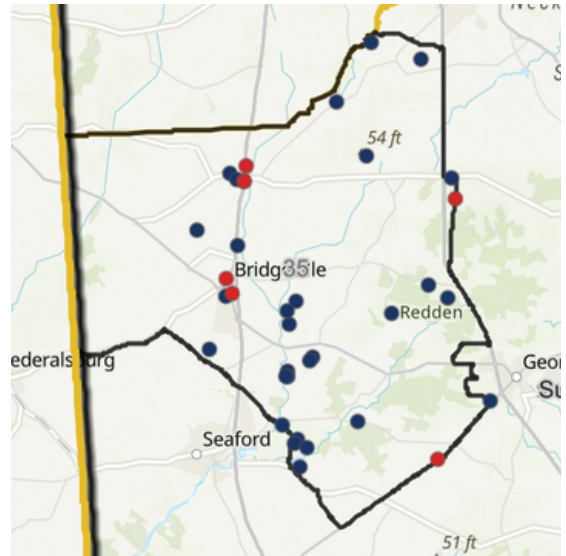
Total number of providers²

36

Estimated number of children 0-9 in district³

2,620

District 35 Map



April 2024 bit.ly/DEchildcaresupply

deaeyc

Delaware Association for the Education of Young Children

Rodel

A GREAT EDUCATION
CHANGES EVERYTHING

FIRST STATE
Pre-K

¹ Overstates number of children that can be served due to calculation based on square footage only rather than actual capacity, and most centers are not at full capacity due to underfunding and related staff shortages

² Does not include unlicensed private and public schools

³ According to the U.S. Census

Child Care Supply In Your District

**BRYAN W.
SHUPE**

State House District 36



Legislators, invest in early care and education!

- Family Child Care
- Child Care Center

Licensed capacity¹

960

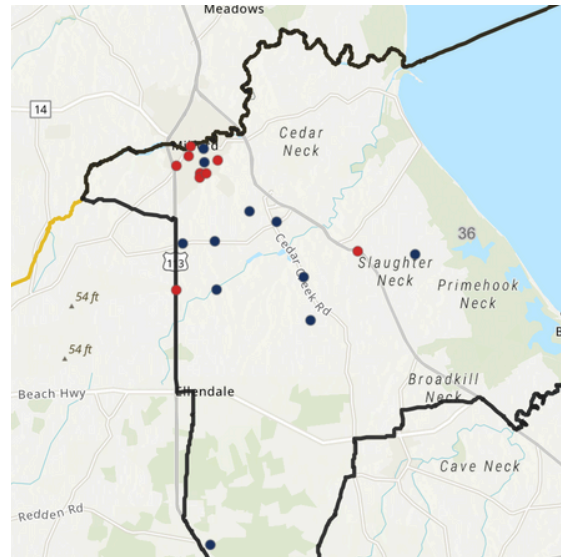
Total number of
providers²

20

Estimated number
of children 0-9 in
district³

2,776

District 36 Map



April 2024 bit.ly/DEchildcaresupply

deaeyc

Delaware Association for the
Education of Young Children

Rodel

A GREAT EDUCATION
CHANGES EVERYTHING

FIRST STATE
Pre-K

¹ Overstates number of children that can be served due to calculation based on square footage only rather than actual capacity, and most centers are not at full capacity due to underfunding and related staff shortages

² Does not include unlicensed private and public schools

³ According to the U.S. Census

Child Care Supply In Your District

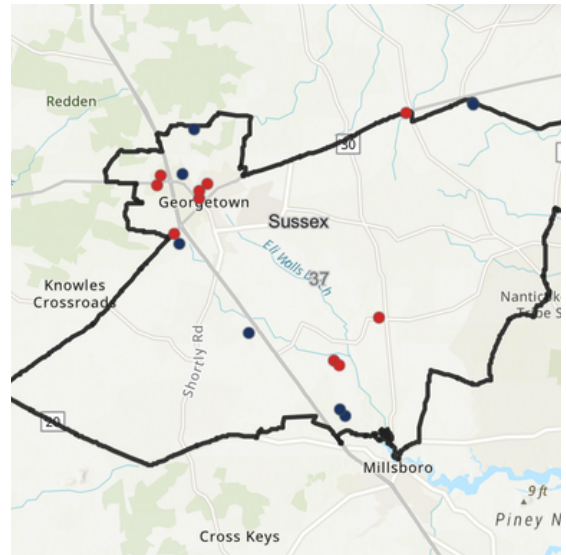
**VALERIE JONES
GLITNER**

State House District 37



Legislators, invest in early care and education!

District 37 Map



- Family Child Care
- Child Care Center

Licensed capacity¹

985

Total number of
providers²

19

Estimated number
of children 0-9 in
district³

3,026

April 2024 bit.ly/DEchildcaresupply

deaeyc

Delaware Association for the
Education of Young Children

Rodel

A GREAT EDUCATION
CHANGES EVERYTHING

FIRST STATE
Pre-K

¹ Overstates number of children that can be served due to calculation based on square footage only rather than actual capacity, and most centers are not at full capacity due to underfunding and related staff shortages

² Does not include unlicensed private and public schools

³ According to the U.S. Census

Child Care Supply In Your District

**RONALD E.
GRAY**

State House District 38



Legislators, invest in early care and education!

- Family Child Care
- Child Care Center

Licensed capacity¹

205

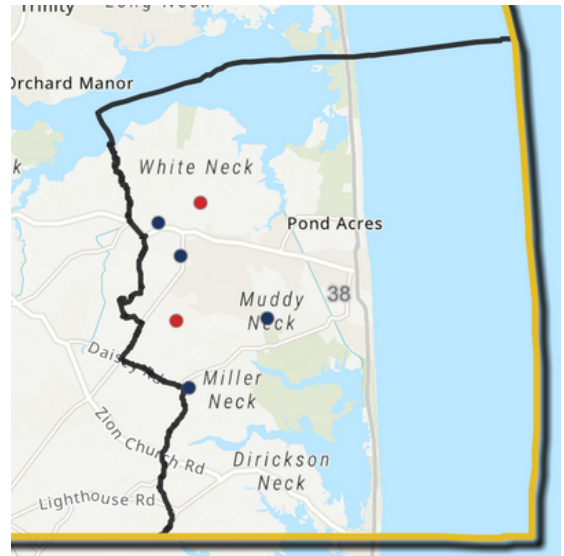
Total number of
providers²

6

Estimated number
of children 0-9 in
district³

1,329

District 38 Map



April 2024 bit.ly/DEchildcaresupply

deaeyc

Delaware Association for the
Education of Young Children

Rodel

A GREAT EDUCATION
CHANGES EVERYTHING

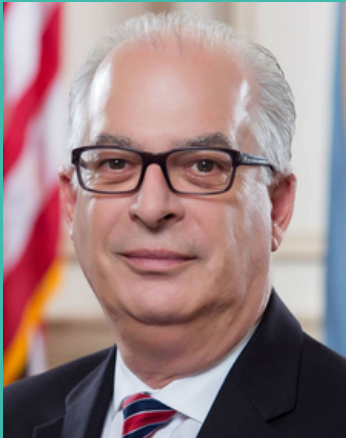
FIRST STATE
Pre-K

¹ Overstates number of children that can be served due to calculation based on square footage only rather than actual capacity, and most centers are not at full capacity due to underfunding and related staff shortages
² Does not include unlicensed private and public schools
³ According to the U.S. Census

Child Care Supply In Your District

**DANIEL B.
SHORT**

State House District 39



Legislators, invest in early care and education!

- Family Child Care
- Child Care Center

Licensed capacity¹

936

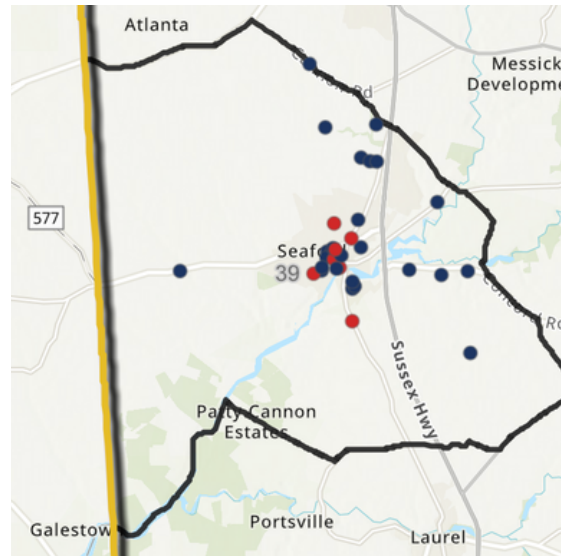
Total number of
providers²

31

Estimated number
of children 0-9 in
district³

2,854

District 39 Map



April 2024 bit.ly/DEchildcaresupply

deaeyc

Delaware Association for the
Education of Young Children

Rodel

A GREAT EDUCATION
CHANGES EVERYTHING

FIRST STATE
Pre-K

¹ Overstates number of children that can be served due to calculation based on square footage only rather than actual capacity, and most centers are not at full capacity due to underfunding and related staff shortages

² Does not include unlicensed private and public schools

³ According to the U.S. Census

Child Care Supply In Your District

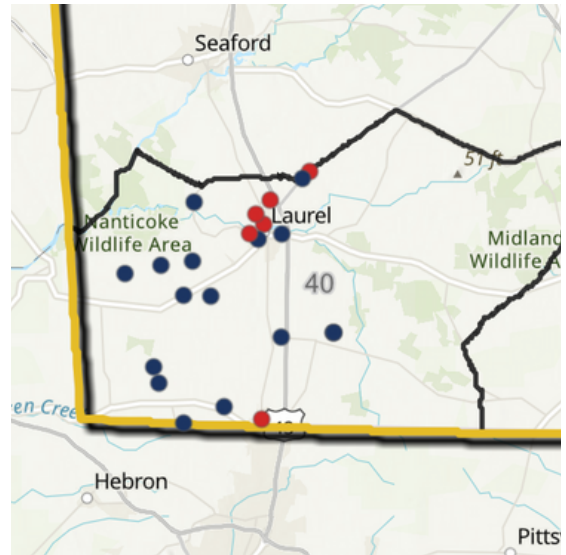
**TIMOTHY D.
DUKES**

State House District 40



Legislators, invest in early care and education!

District 40 Map



- Family Child Care
- Child Care Center

Licensed capacity¹

784

Total number of providers²

23

Estimated number of children 0-9 in district³

3,408

April 2024 bit.ly/DEchildcaresupply

deaeyc

Delaware Association for the Education of Young Children

Rodel

A GREAT EDUCATION CHANGES EVERYTHING

FIRST STATE
Pre-K

¹ Overstates number of children that can be served due to calculation based on square footage only rather than actual capacity, and most centers are not at full capacity due to underfunding and related staff shortages

² Does not include unlicensed private and public schools

³ According to the U.S. Census

Child Care Supply In Your District

**RICHARD G.
COLLINS**

State House District 41



Legislators, invest in early care and education!

- Family Child Care
- Child Care Center

Licensed capacity¹

1,322

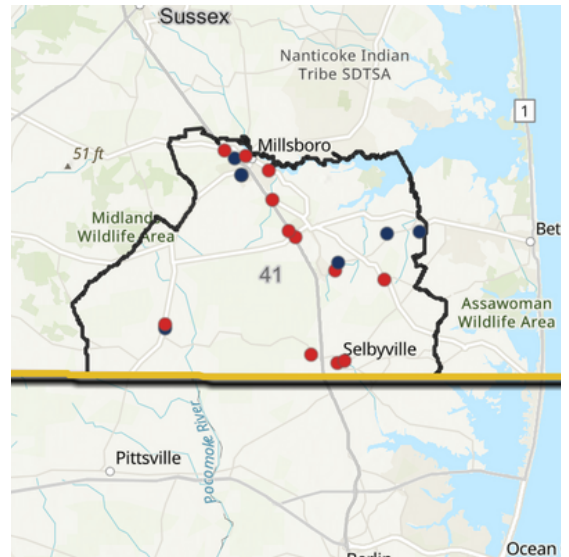
Total number of
providers²

19

Estimated number
of children 0-9 in
district³

2,749

District 41 Map



April 2024 bit.ly/DEchildcaresupply

deaeyc

Delaware Association for the
Education of Young Children

Rodel

A GREAT EDUCATION
CHANGES EVERYTHING

FIRST STATE
Pre-K

¹ Overstates number of children that can be served due to calculation based on square footage only rather than actual capacity, and most centers are not at full capacity due to underfunding and related staff shortages

² Does not include unlicensed private and public schools

³ According to the U.S. Census

Child Care Supply In Your District

SARAH MCBRIDE

State Senate District 1



Legislators, invest in early care and education!

- Family Child Care
- Child Care Center

Licensed capacity¹

2,133

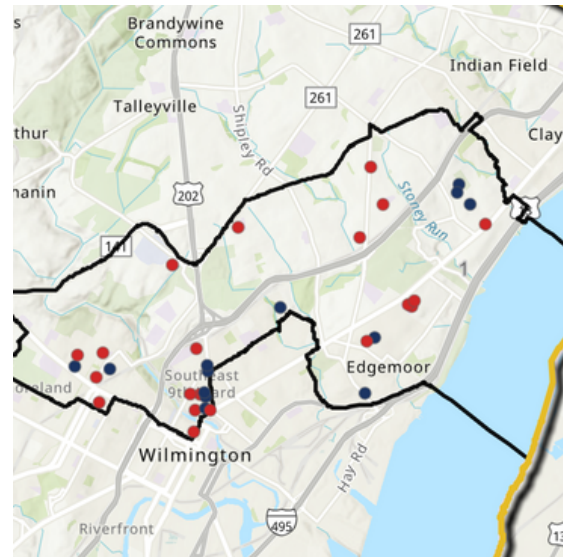
Total number of providers²

33

Estimated number of children 0-9 in district³

4,613

District 1 Map



April 2024 bit.ly/DEchildcaresupply

deaeyc

Delaware Association for the Education of Young Children

Rodel

A GREAT EDUCATION CHANGES EVERYTHING

FIRST STATE
Pre-K

¹ Overstates number of children that can be served due to calculation based on square footage only rather than actual capacity, and most centers are not at full capacity due to underfunding and related staff shortages

² Does not include unlicensed private and public schools

³ According to the U.S. Census

Child Care Supply In Your District

**DARIUS J.
BROWN**

State Senate District 2



Legislators, invest in early care and education!

- Family Child Care
- Child Care Center

Licensed capacity¹

5,222

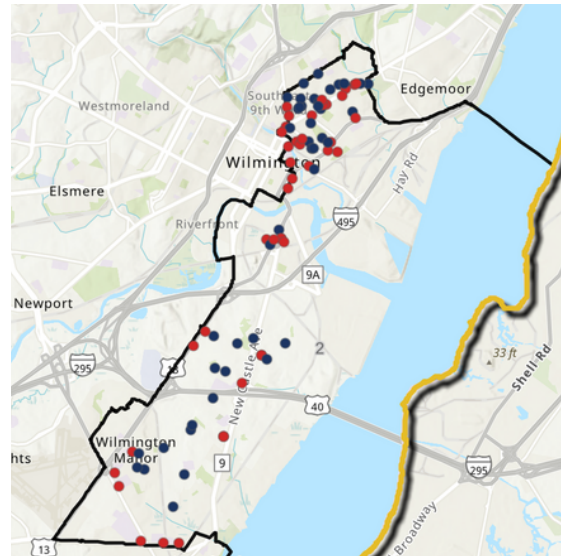
Total number of providers²

86

Estimated number of children 0-9 in district³

6,693

District 2 Map



April 2024 bit.ly/DEchildcaresupply

deaeyc

Delaware Association for the Education of Young Children

Rodel

A GREAT EDUCATION CHANGES EVERYTHING

FIRST STATE
Pre-K

¹ Overstates number of children that can be served due to calculation based on square footage only rather than actual capacity, and most centers are not at full capacity due to underfunding and related staff shortages

² Does not include unlicensed private and public schools

³ According to the U.S. Census

Child Care Supply In Your District

**S. ELIZABETH
LOCKMAN**

State Senate District 3



Legislators, invest in early care and education!

- Family Child Care
- Child Care Center

Licensed capacity¹

5,685

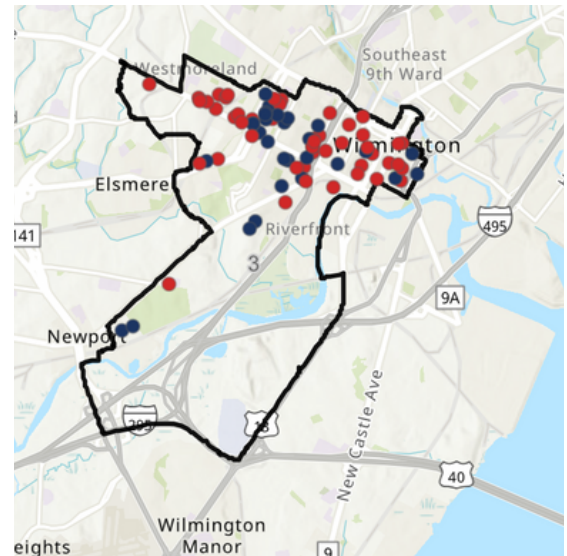
Total number of
providers²

79

Estimated number
of children 0-9 in
district³

5,314

District 3 Map



April 2024 bit.ly/DEchildcaresupply

deaeyc

Delaware Association for the
Education of Young Children

Rodel

A GREAT EDUCATION
CHANGES EVERYTHING

FIRST STATE
Pre-K

¹ Overstates number of children that can be served due to calculation based on square footage only rather than actual capacity, and most centers are not at full capacity due to underfunding and related staff shortages

² Does not include unlicensed private and public schools

³ According to the U.S. Census

Child Care Supply In Your District

LAURA V. STURGEON
State Senate District 4



Legislators, invest in early care and education!

District 4 Map

- Family Child Care
- Child Care Center

Licensed capacity¹

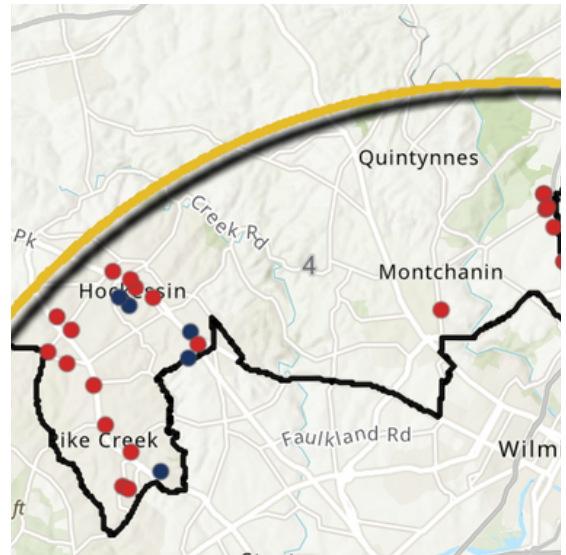
3,225

Total number of providers²

29

Estimated number of children 0-9 in district³

3,942



April 2024 bit.ly/DEchildcaresupply

deaeyc

Delaware Association for the Education of Young Children

Rodel

A GREAT EDUCATION CHANGES EVERYTHING

FIRST STATE **Pre-K**

¹ Overstates number of children that can be served due to calculation based on square footage only rather than actual capacity, and most centers are not at full capacity due to underfunding and related staff shortages

² Does not include unlicensed private and public schools

³ According to the U.S. Census

Child Care Supply In Your District

**KYLE
EVANS GAY**

State Senate District 5



Legislators, invest in early care and education!

- Family Child Care
- Child Care Center

Licensed capacity¹

2,525

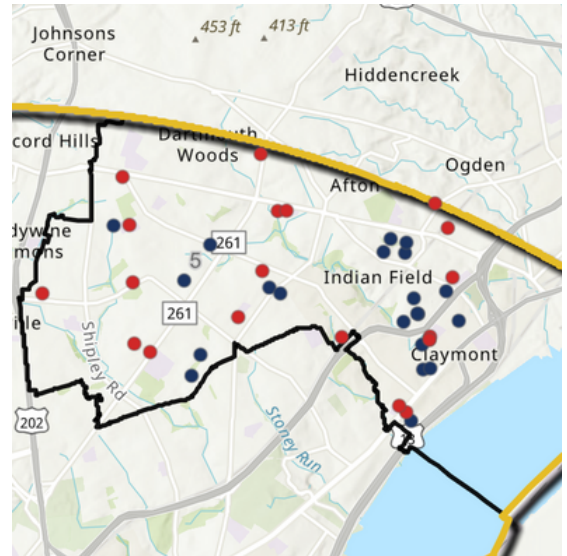
Total number of providers²

41

Estimated number of children 0-9 in district³

5,205

District 5 Map



April 2024 bit.ly/DEchildcaresupply

deaeyc

Delaware Association for the Education of Young Children

Rodel

A GREAT EDUCATION CHANGES EVERYTHING

FIRST STATE
Pre-K

¹ Overstates number of children that can be served due to calculation based on square footage only rather than actual capacity, and most centers are not at full capacity due to underfunding and related staff shortages

² Does not include unlicensed private and public schools

³ According to the U.S. Census

Child Care Supply In Your District

Legislators, invest in early care and education!

**RUSSELL
HUXTABLE**
State Senate District 6



- Family Child Care
- Child Care Center

Licensed capacity¹

1,978

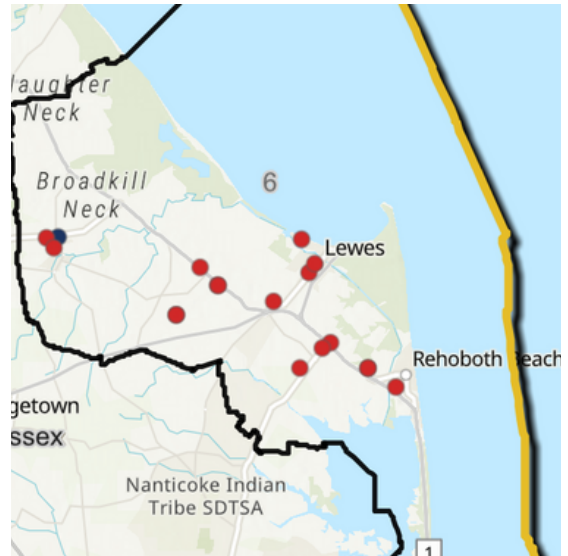
Total number of
providers²

18

Estimated number
of children 0-9 in
district³

3,106

District 6 Map



April 2024 bit.ly/DEchildcaresupply

deaeyc

Delaware Association for the
Education of Young Children

Rodel

A GREAT EDUCATION
CHANGES EVERYTHING

FIRST STATE
Pre-K

¹ Overstates number of children that can be served due to calculation based on square footage only rather than actual capacity, and most centers are not at full capacity due to underfunding and related staff shortages

² Does not include unlicensed private and public schools

³ According to the U.S. Census

Child Care Supply In Your District

**SPIROS
MANTZAVINOS**

State Senate District 7



Legislators, invest in early care and education!

- Family Child Care
- Child Care Center

Licensed capacity¹

1,972

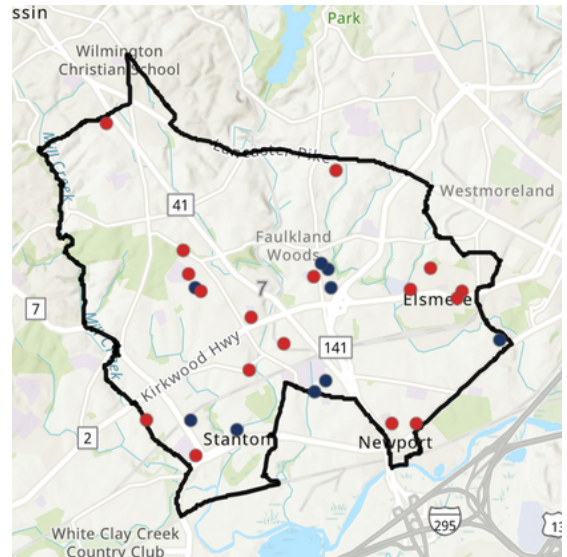
Total number of providers²

26

Estimated number of children 0-9 in district³

4,836

District 7 Map



April 2024 bit.ly/DEchildcaresupply

deaeyc

Delaware Association for the Education of Young Children

Rodel

A GREAT EDUCATION
CHANGES EVERYTHING

FIRST STATE
Pre-K

¹ Overstates number of children that can be served due to calculation based on square footage only rather than actual capacity, and most centers are not at full capacity due to underfunding and related staff shortages

² Does not include unlicensed private and public schools

³ According to the U.S. Census

Child Care Supply In Your District

**DAVID P.
SOKOLA**

State Senate District 8



Legislators, invest in early care and education!

- Family Child Care
- Child Care Center

Licensed capacity¹

1,952

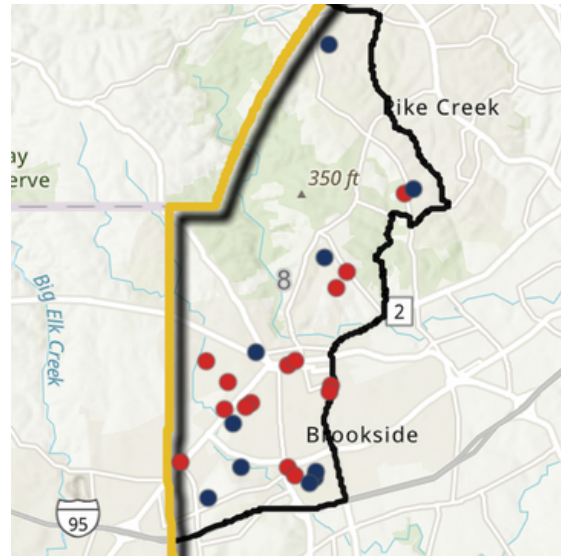
Total number of
providers²

25

Estimated number
of children 0-9 in
district³

3,354

District 8 Map



April 2024 bit.ly/DEchildcaresupply

deaeyc

Delaware Association for the
Education of Young Children

Rodel

A GREAT EDUCATION
CHANGES EVERYTHING

FIRST STATE
Pre-K

¹ Overstates number of children that can be served due to calculation based on square footage only rather than actual capacity, and most centers are not at full capacity due to underfunding and related staff shortages

² Does not include unlicensed private and public schools

³ According to the U.S. Census

Child Care Supply In Your District

**JOHN "JACK"
WALSH**
State Senate District 9



Legislators, invest in early care and education!

- Family Child Care
- Child Care Center

Licensed capacity¹

2,954

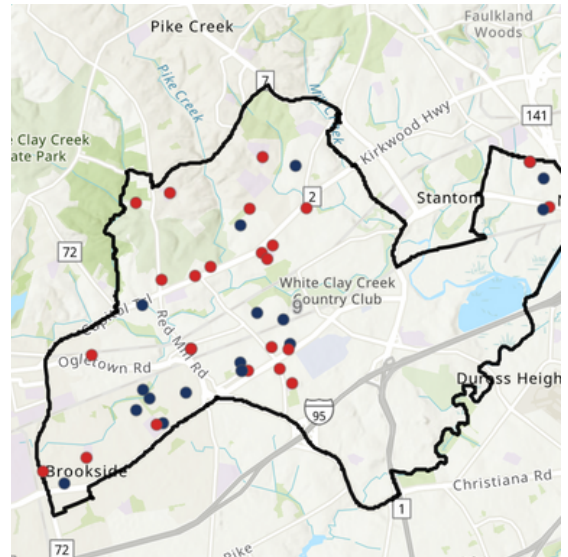
Total number of
providers²

43

Estimated number
of children 0-9 in
district³

5,615

District 9 Map



April 2024 bit.ly/DEchildcaresupply

deaeyc

Delaware Association for the
Education of Young Children

Rodel

A GREAT EDUCATION
CHANGES EVERYTHING

FIRST STATE
Pre-K

¹ Overstates number of children that can be served due to calculation based on square footage only rather than actual capacity, and most centers are not at full capacity due to underfunding and related staff shortages

² Does not include unlicensed private and public schools

³ According to the U.S. Census

Child Care Supply In Your District

**STEPHANIE L.
HANSEN**

State Senate District 10



Legislators, invest in early care and education!

- Family Child Care
- Child Care Center

Licensed capacity¹

2,851

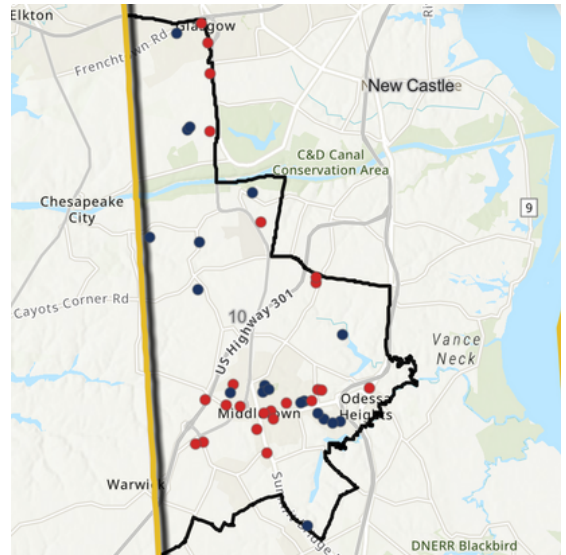
Total number of
providers²

42

Estimated number
of children 0-9 in
district³

5,719

District 10 Map



April 2024 bit.ly/DEchildcaresupply

deaeyc

Delaware Association for the
Education of Young Children

Rodel

A GREAT EDUCATION
CHANGES EVERYTHING

FIRST STATE
Pre-K

¹ Overstates number of children that can be served due to calculation based on square footage only rather than actual capacity, and most centers are not at full capacity due to underfunding and related staff shortages

² Does not include unlicensed private and public schools

³ According to the U.S. Census

Child Care Supply In Your District

BRYAN TOWNSEND

State Senate District 11



Legislators, invest in early care and education!

- Family Child Care
- Child Care Center

Licensed capacity¹

2,742

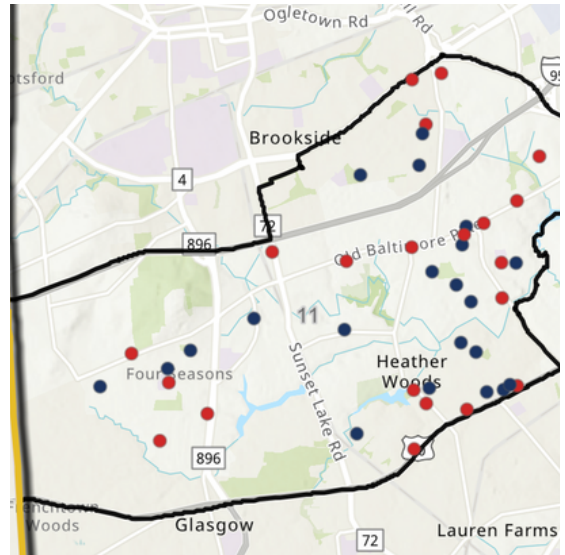
Total number of providers²

42

Estimated number of children 0-9 in district³

5,644

District 11 Map



April 2024 bit.ly/DEchildcaresupply

deaeyc

Delaware Association for the Education of Young Children

Rodel

A GREAT EDUCATION CHANGES EVERYTHING

FIRST STATE
Pre-K

1 Overstates number of children that can be served due to calculation based on square footage only rather than actual capacity, and most centers are not at full capacity due to underfunding and related staff shortages

2 Does not include unlicensed private and public schools

3 According to the U.S. Census

Child Care Supply In Your District

NICOLE POORE

State Senate District 12



Legislators, invest in early care and education!

- Family Child Care
- Child Care Center

Licensed capacity¹

2,330

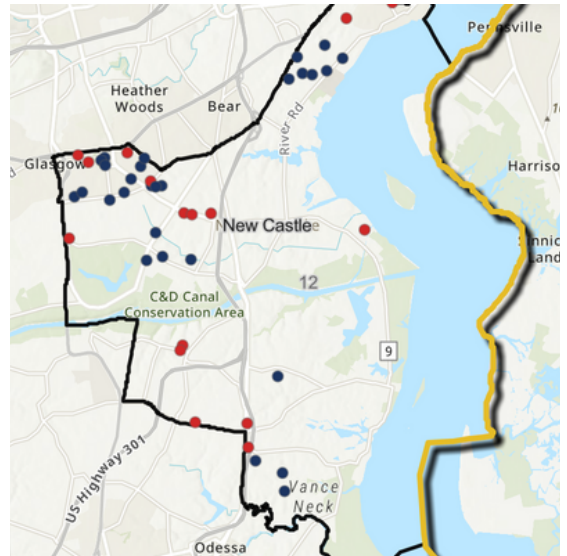
Total number of providers²

45

Estimated number of children 0-9 in district³

5,563

District 12 Map



April 2024 bit.ly/DEchildcaresupply

deaeyc

Delaware Association for the Education of Young Children

Rodel

A GREAT EDUCATION CHANGES EVERYTHING

FIRST STATE
Pre-K

¹ Overstates number of children that can be served due to calculation based on square footage only rather than actual capacity, and most centers are not at full capacity due to underfunding and related staff shortages

² Does not include unlicensed private and public schools

³ According to the U.S. Census

Child Care Supply In Your District

MARIE PINKNEY

State Senate District 13



Legislators, invest in early care and education!

- Family Child Care
- Child Care Center

Licensed capacity¹

2,236

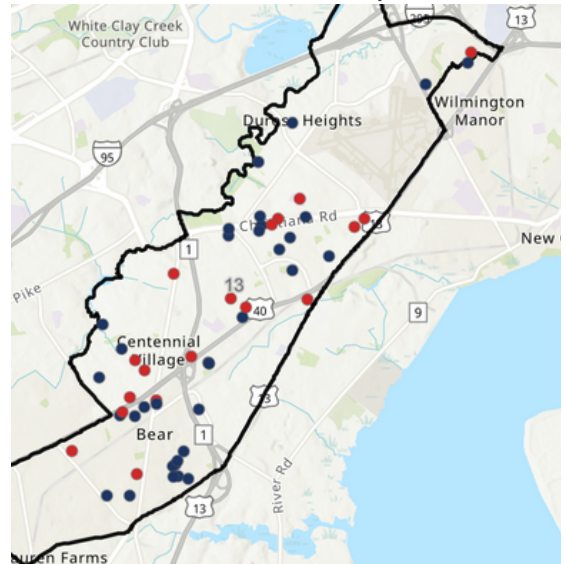
Total number of providers²

53

Estimated number of children 0-9 in district³

5,025

District 13 Map



April 2024 bit.ly/DEchildcaresupply

deaeyc

Delaware Association for the Education of Young Children

Rodel

A GREAT EDUCATION CHANGES EVERYTHING

FIRST STATE
Pre-K

1 Overstates number of children that can be served due to calculation based on square footage only rather than actual capacity, and most centers are not at full capacity due to underfunding and related staff shortages

2 Does not include unlicensed private and public schools

3 According to the U.S. Census

Child Care Supply In Your District

KYRA L. HOFFNER
State Senate District 14



Legislators, invest in early care and education!

- Family Child Care
- Child Care Center

Licensed capacity¹

2,362

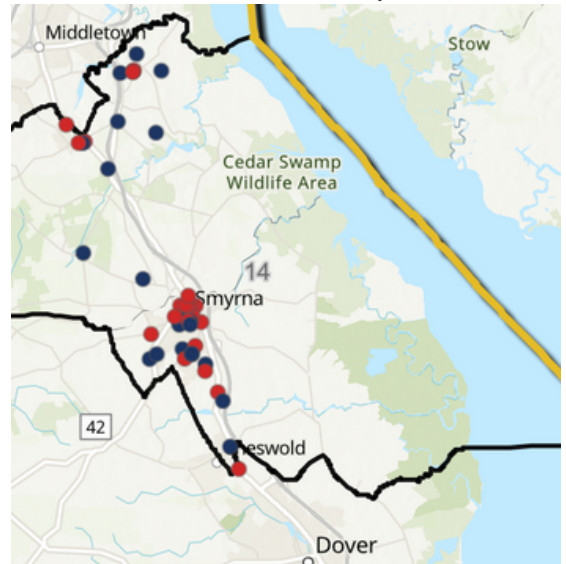
Total number of providers²

43

Estimated number of children 0-9 in district³

5,025

District 14 Map



April 2024 bit.ly/DEchildcaresupply

deaeyc

Delaware Association for the Education of Young Children

Rodel

A GREAT EDUCATION CHANGES EVERYTHING

FIRST STATE
Pre-K

¹ Overstates number of children that can be served due to calculation based on square footage only rather than actual capacity, and most centers are not at full capacity due to underfunding and related staff shortages

² Does not include unlicensed private and public schools

³ According to the U.S. Census

Child Care Supply In Your District

DAVE G. LAWSON
State Senate District 15



Legislators, invest in early care and education!

- Family Child Care
- Child Care Center

Licensed capacity¹

1,074

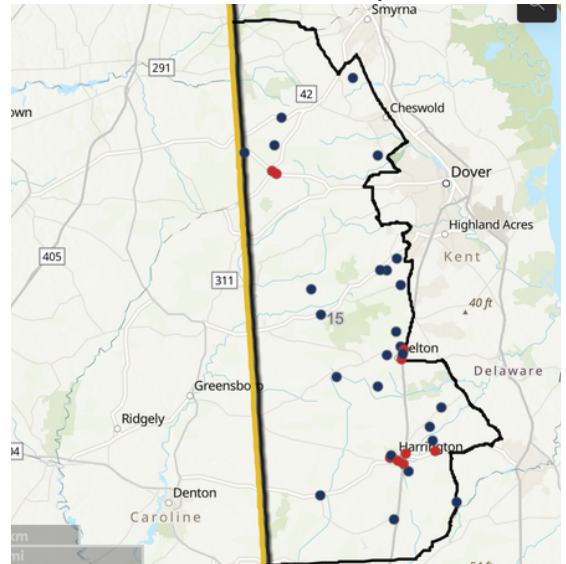
Total number of providers²

34

Estimated number of children 0-9 in district³

5,587

District 15 Map



April 2024 bit.ly/DEchildcaresupply

deaeyc

Delaware Association for the Education of Young Children

Rodel

A GREAT EDUCATION CHANGES EVERYTHING

FIRST STATE
Pre-K

¹ Overstates number of children that can be served due to calculation based on square footage only rather than actual capacity, and most centers are not at full capacity due to underfunding and related staff shortages

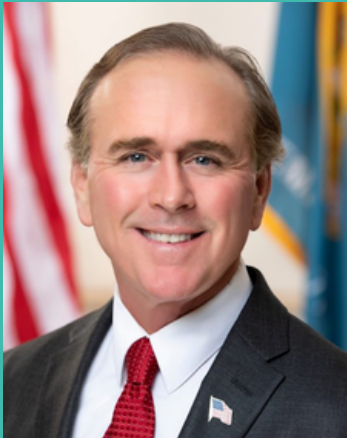
² Does not include unlicensed private and public schools

³ According to the U.S. Census

Child Care Supply In Your District

ERIC BUCKSON

State Senate District 16



Legislators, invest in early care and education!

- Family Child Care
- Child Care Center

Licensed capacity¹

1,008

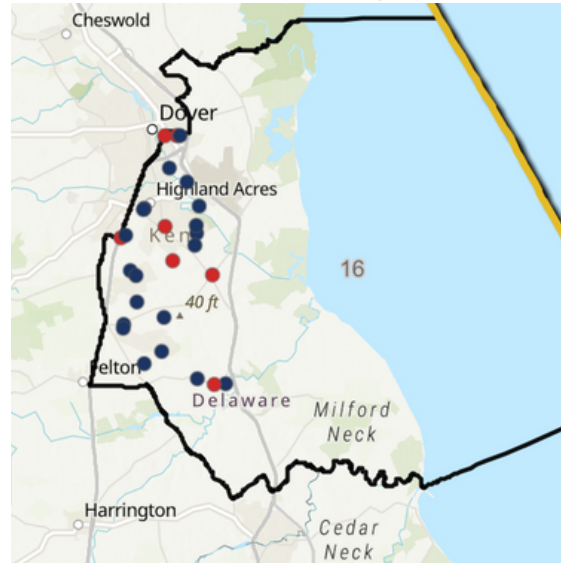
Total number of providers²

27

Estimated number of children 0-9 in district³

6,719

District 16 Map



April 2024 bit.ly/DEchildcaresupply

deaeyc

Delaware Association for the Education of Young Children

Rodel

A GREAT EDUCATION CHANGES EVERYTHING

FIRST STATE
Pre-K

¹ Overstates number of children that can be served due to calculation based on square footage only rather than actual capacity, and most centers are not at full capacity due to underfunding and related staff shortages

² Does not include unlicensed private and public schools

³ According to the U.S. Census

Child Care Supply In Your District

TREY PARADEE

State Senate District 17



Legislators, invest in early care and education!

- Family Child Care
- Child Care Center

Licensed capacity¹

3,366

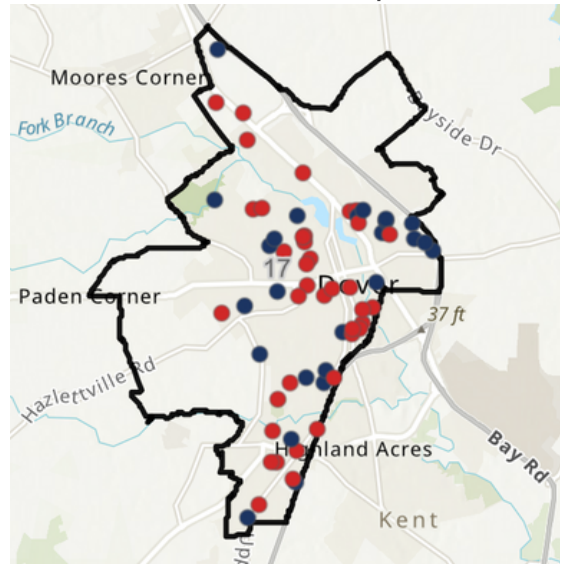
Total number of providers²

63

Estimated number of children 0-9 in district³

5,459

District 17 Map



April 2024 bit.ly/DEchildcaresupply

deaeyc

Delaware Association for the Education of Young Children

Rodel

A GREAT EDUCATION CHANGES EVERYTHING

FIRST STATE
Pre-K

¹ Overstates number of children that can be served due to calculation based on square footage only rather than actual capacity, and most centers are not at full capacity due to underfunding and related staff shortages
² Does not include unlicensed private and public schools
³ According to the U.S. Census

Child Care Supply In Your District

Legislators, invest in early care and education!

DAVE L. WILSON
State Senate District 18



- Family Child Care
- Child Care Center

Licensed capacity¹

2,133

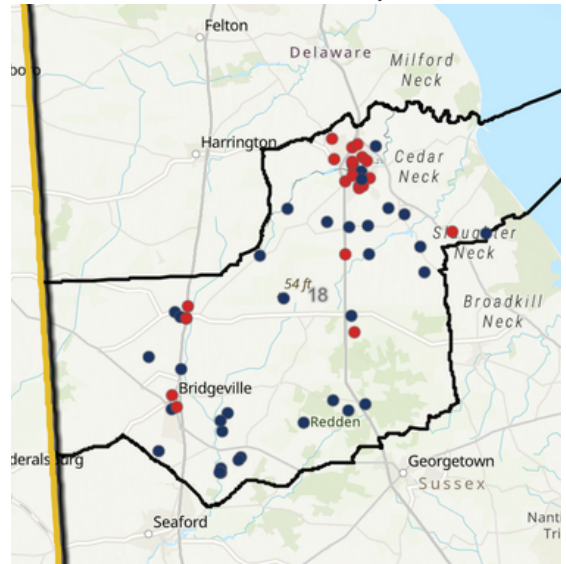
Total number of providers²

57

Estimated number of children 0-9 in district³

6,103

District 18 Map



April 2024 bit.ly/DEchildcaresupply

deaeyc

Delaware Association for the Education of Young Children

Rodel

A GREAT EDUCATION CHANGES EVERYTHING

FIRST STATE
Pre-K

¹ Overstates number of children that can be served due to calculation based on square footage only rather than actual capacity, and most centers are not at full capacity due to underfunding and related staff shortages

² Does not include unlicensed private and public schools

³ According to the U.S. Census

Child Care Supply In Your District

Legislators, invest in early care and education!

**BRIAN
PETTYJOHN**
State Senate District 19



- Family Child Care
- Child Care Center

Licensed capacity¹

1,489

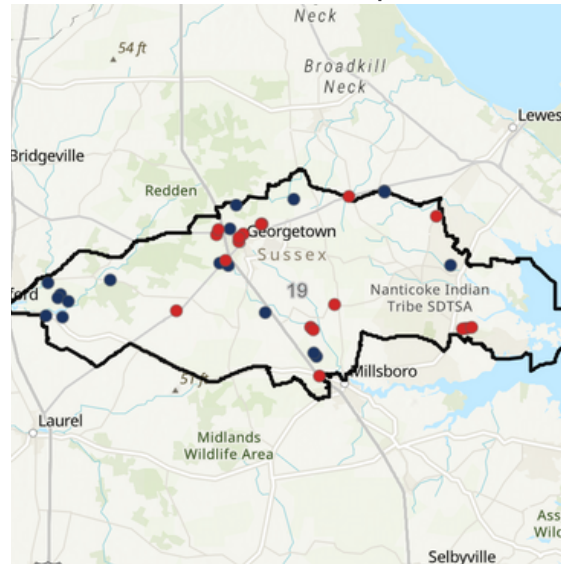
Total number of
providers²

36

Estimated number
of children 0-9 in
district³

4,919

District 19 Map



April 2024 bit.ly/DEchildcaresupply

deaeyc

Delaware Association for the
Education of Young Children

Rodel

A GREAT EDUCATION
CHANGES EVERYTHING

FIRST STATE
Pre-K

¹ Overstates number of children that can be served due to calculation based on square footage only rather than actual capacity, and most centers are not at full capacity due to underfunding and related staff shortages

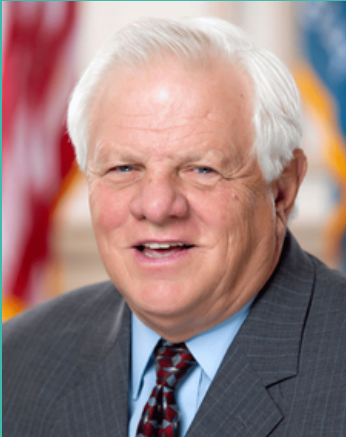
² Does not include unlicensed private and public schools

³ According to the U.S. Census

Child Care Supply In Your District

**GERALD W.
HOCKER**

State Senate District 20



Legislators, invest in early care and education!

- Family Child Care
- Child Care Center

Licensed capacity¹

1,499

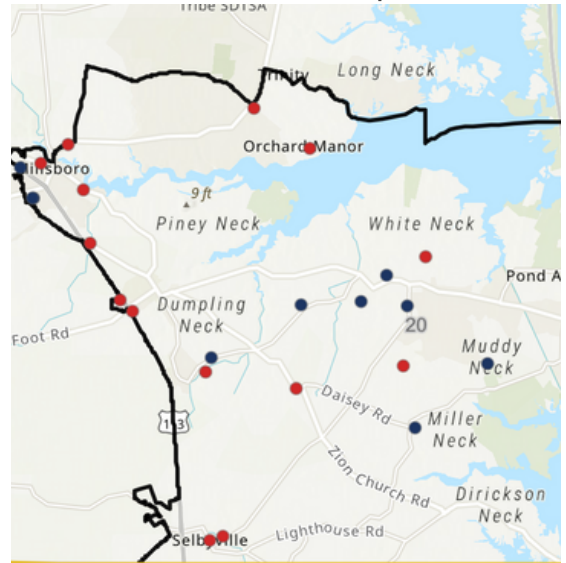
Total number of
providers²

24

Estimated number
of children 0-9 in
district³

3,517

District 20 Map



April 2024 bit.ly/DEchildcaresupply

deaeyc

Delaware Association for the
Education of Young Children

Rodel

A GREAT EDUCATION
CHANGES EVERYTHING

FIRST STATE
Pre-K

¹ Overstates number of children that can be served due to calculation based on square footage only rather than actual capacity, and most centers are not at full capacity due to underfunding and related staff shortages


² Does not include unlicensed private and public schools

³ According to the U.S. Census

Child Care Supply In Your District

Legislators, invest in early care and education!

BRYANT L. RICHARDSON
State Senate District 21



- Family Child Care
- Child Care Center

Licensed capacity¹

1,928

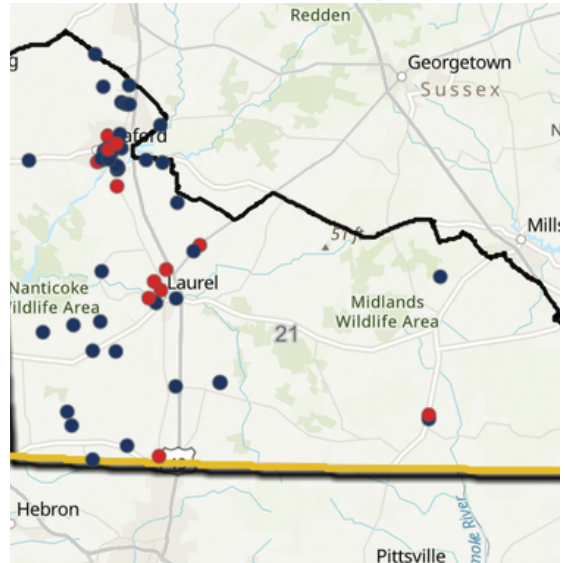
Total number of providers²

56

Estimated number of children 0-9 in district³

6,482

District 21 Map



April 2024 bit.ly/DEchildcaresupply

deaeyc

Delaware Association for the Education of Young Children

Rodel

A GREAT EDUCATION CHANGES EVERYTHING

FIRST STATE **Pre-K**

¹ Overstates number of children that can be served due to calculation based on square footage only rather than actual capacity, and most centers are not at full capacity due to underfunding and related staff shortages

² Does not include unlicensed private and public schools

³ According to the U.S. Census

Working Families Can't Find or Afford Child Care: It's Holding Delaware's Economy Back

New Castle County Parents Speak Up

"We are not able to afford both child care and extended care. We use PTO and have made special arrangements with our employers."

"Despite having a high salary between parents, student loan payments and child care costs [mean] there are many months when we cannot save for the future the way we hoped."

"The cost of child care makes it impossible to get ahead, let alone pay debt, or do anything extra outside of daily living."



@First State Pre-K



@FirstStatePreK

#InvestEarlyDE

What You Can Do: Tell Legislators to Invest in Early Care and Education

- Increase per-child rates so programs can open more classrooms and increase staff pay and benefits
- Expand eligibility to at least 250% of the Federal Poverty Level
- Pay a statewide rate, increase rates in all counties to match the New Castle County rate
- Increase special education rates to cover necessary supports
- Pay providers based on enrollment to cover fixed costs

Send a message using this link



bit.ly/ECCASK

Visit firststateprek.com for more resources and information

Working Families Can't Find or Afford Child Care: It's Holding Delaware's Economy Back

Kent County Parents Speak Up

"I have a good [child care center] but it's costing me quite a bit of money even with [Purchase of Care]."

"[My family] can't find or [is on a] waiting list for child care."

"As a full time school district employee with a self-employed spouse, my entire paycheck goes to child care, but I work so we can have benefits and so my daughters can have quality care that is so important. I hope we can help the families in our community get the same experience my daughters are getting, and provide it so that families do not have to sacrifice to access it."

What You Can Do: Tell Legislators to Invest in Early Care and Education

- Increase per-child rates so programs can open more classrooms and increase staff pay and benefits
- Expand eligibility to at least 250% of the Federal Poverty Level
- Pay a statewide rate, increase rates in all counties to match the New Castle County rate
- Increase special education rates to cover necessary supports
- Pay providers based on enrollment to cover fixed costs

Send a message using this link



bit.ly/ECCASK

Working Families Can't Find or Afford Child Care: It's Holding Delaware's Economy Back

Sussex County Parents Speak Up

"I stay home because we could not afford bills and child care. Even to stay home I am having to file bankruptcy because we can't even afford this but this was the better option compared to fulltime care so I can work. The cost of EVERYTHING is going up but job pay is increasing at a MUCH slower rate."

"[We are] living in a child care desert so we take it day by day."

"I used a [child care] center last year but pulled out due to cost and care quality."

 @First State Pre-K  @FirstStatePreK

#InvestEarlyDE

What You Can Do: Tell Legislators to Invest in Early Care and Education

- Increase per-child rates so programs can open more classrooms and increase staff pay and benefits
- Expand eligibility to at least 250% of the Federal Poverty Level
- Pay a statewide rate, increase rates in all counties to match the New Castle County rate
- Increase special education rates to cover necessary supports
- Pay providers based on enrollment to cover fixed costs

Send a message using this link



Visit [firststateprek.com](https://www.firststateprek.com) for more resources and information